

Anti-ESRRA Antibody (R1N40)

Summary

Catalog No.	RHC88901
Clone ID	R1N40
Host species	Rabbit
Tested applications	FCM: 1:20-1:100, IP: 1:20-1:50, WB: 1:1000-1:2000
Species reactivity	Human, Mouse, Rat
Form	Liquid
Storage buffer	0.01M PBS, pH 7.4, 0.05% BSA, 50% Glycerol, 0.05% Sodium azide.
Concentration	1 mg/ml
Purity	>95% by SDS-PAGE.
Clonality	Monoclonal
Isotype	IgG
Applications	FCM, IP, WB
Target	ESRRA, ERR1, NR3B1, Estrogen-related receptor alpha, Estrogen receptor-like 1, Nuclear receptor subfamily 3 group B member 1, Steroid hormone receptor ERR1, ERR-alpha, ESRL1
Purification	Protein A/G purified from cell culture supernatant.
Endotoxin level	Please contact with the lab for this information.
Accession	P11474

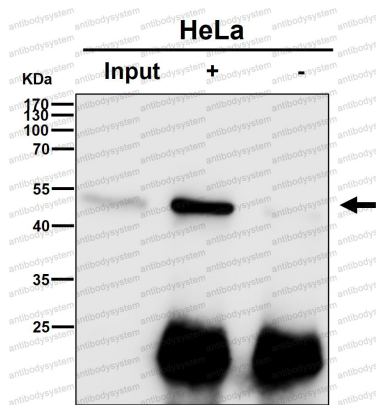
Recombinant Proteins & Antibodies

Stability and Storage

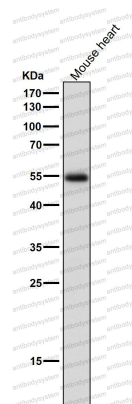
Use a manual defrost freezer and avoid repeated freeze thaw cycles. Store at 4 °C for frequent use. Store at -20 °C for twelve months from the date of receipt.

Note

For research use only.

Data Image

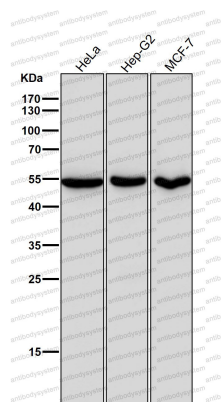
Immunoprecipitation



Western blot

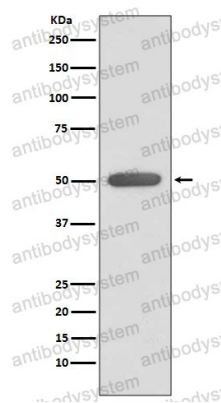
Immunoprecipitate (IP) analysis using the Antibody at 1:50 dilution. (wb at 1:3K dilution)

All lanes use the Antibody at 1:2K dilution for 1 hour at room temperature.



Western blot

All lanes use the Antibody at 1:2K dilution for 1 hour at room temperature.



Western blot

Western blot analysis of ERR alpha expression in HeLa cell lysate.