

Anti-LAMC1 Antibody (R1N23)

Summary

Catalog No.	RHC85001
Clone ID	R1N23
Host species	Rabbit
Tested applications	IHC: 1:50-1:100, IP: 1:20, WB: 1:500-1:1000
Species reactivity	Human, Mouse, Rat
Form	Liquid
Storage buffer	0.01M PBS, pH 7.4, 0.05% BSA, 50% Glycerol, 0.05% Sodium azide.
Concentration	1 mg/ml
Purity	>95% by SDS-PAGE.
Clonality	Monoclonal
Isotype	IgG
Applications	IHC, IP, WB
Target	Laminin-7 subunit gamma, Laminin-1 subunit gamma, Laminin subunit gamma-1, Laminin-10 subunit gamma, Laminin-2 subunit gamma, S-laminin subunit gamma, LAMC1, Laminin-11 subunit gamma, Laminin-3 subunit gamma, S-LAM gamma, Laminin-6 subunit gamma, Laminin-9 subunit gamma, Laminin-4 subunit gamma, Laminin-8 subunit gamma, LAMB2, Laminin B2 chain
Purification	Protein A/G purified from cell culture supernatant.
Endotoxin level	Please contact with the lab for this information.
Accession	P11047

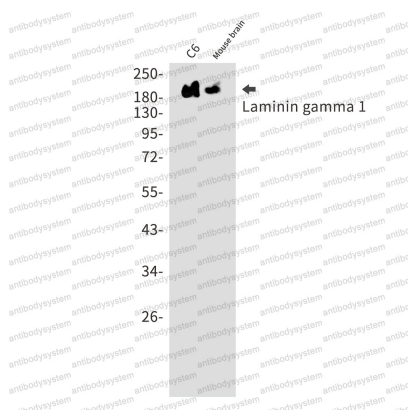
Stability and Storage

Use a manual defrost freezer and avoid repeated freeze thaw cycles. Store at 4 °C for frequent use. Store at -20 °C for twelve months from the date of receipt.

Note

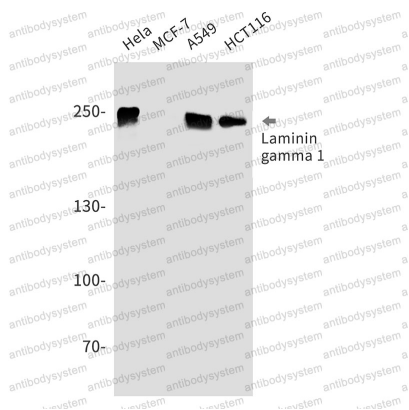
For research use only.

Data Image



Western blot

Western blot analysis of Laminin gamma 1 in C6, mouse brain lysates using Laminin gamma 1 antibody.



Western blot

Western blot analysis of Laminin gamma 1 in HeLa, MCF-7, A549, HCT116 lysates using Laminin gamma 1 antibody.