

Anti-MYL2 Antibody (R1N20)

Summary

Catalog No.	RHC84601
Clone ID	R1N20
Host species	Rabbit
Tested applications	IHC: 1:50-1:100, IP: 1:20, WB: 1:500-1:1000
Species reactivity	Mouse, Rat
Form	Liquid
Storage buffer	0.01M PBS, pH 7.4, 0.05% BSA, 50% Glycerol, 0.05% Sodium azide.
Concentration	1 mg/ml
Purity	>95% by SDS-PAGE.
Clonality	Monoclonal
Isotype	IgG
Applications	IHC, IP, WB
Target	Ventricular myosin light chain 2, Myosin light chain 2, slow skeletal/ventricular muscle isoform, Cardiac myosin light chain 2, MLC-2v, MLC-2s/v, MLC-2, Myosin regulatory light chain 2, ventricular/cardiac muscle isoform, MLC2, MYL2
Purification	Protein A/G purified from cell culture supernatant.
Endotoxin level	Please contact with the lab for this information.
Accession	P10916

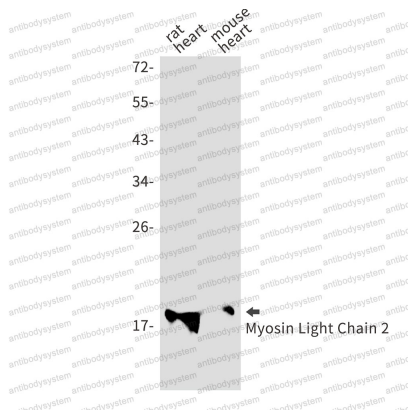
Recombinant Proteins & Antibodies

Stability and Storage

Use a manual defrost freezer and avoid repeated freeze thaw cycles. Store at 4 °C for frequent use. Store at -20 °C for twelve months from the date of receipt.

Note

For research use only.

Data Image

Western blot

Western blot analysis of Myosin Light Chain 2 in rat heart, mouse heart lysates using MYL2 antibody.