

Anti-CLU/Clusterin Antibody (R1N15)

Summary

Catalog No.	RMC84102
Clone ID	R1N15
Host species	Rabbit
Tested applications	IHC: 1:100-1:200, IP: 1:20-1:50, WB: 1:1000-1:2000
Species reactivity	Mouse, Rat
Form	Liquid
Storage buffer	0.01M PBS, pH 7.4, 0.05% BSA, 50% Glycerol, 0.05% Sodium azide.
Concentration	1 mg/ml
Purity	>95% by SDS-PAGE.
Clonality	Monoclonal
Isotype	IgG
Applications	IHC, IP, WB
Target	APOJ, ApoJalpha, NA1/NA2, Complement cytolysis inhibitor, Complement cytolysis inhibitor a chain, Ku70-binding protein 1, Testosterone-repressed prostate message 2, ApoJbeta, TRPM-2, Complement cytolysis inhibitor b chain, SGP-2, KUB1, Apolipoprotein J, Apo-J, Clusterin, Sulfated glycoprotein 2, Aging-associated gene 4 protein, CLI, CLU, Complement-associated protein SP-40,40
Purification	Protein A/G purified from cell culture supernatant.
Endotoxin level	Please contact with the lab for this information.
Accession	Q06890, P10909

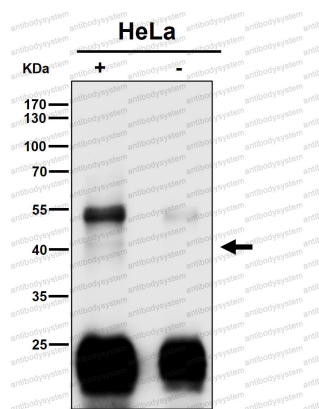
Stability and Storage

Use a manual defrost freezer and avoid repeated freeze thaw cycles. Store at 4 °C for frequent use. Store at -20 °C for twelve months from the date of receipt.

Note

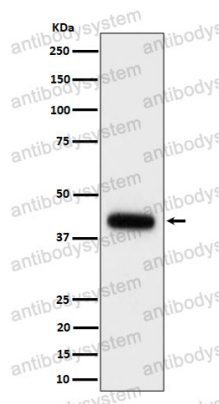
For research use only.

Data Image



Immunoprecipitation

Immunoprecipitate (IP) analysis using the Antibody at 1:50 dilution. (wb at 1:1000 dilution)



Western blot

Western blot analysis of Clusterin expression in mouse serum cell lysate.