

# Anti-Phospho-Tau (Ser202/Thr205) Antibody (R1M91)

## Summary

---

|                            |                                                                                                                                   |
|----------------------------|-----------------------------------------------------------------------------------------------------------------------------------|
| <b>Catalog No.</b>         | RHC82438                                                                                                                          |
| <b>Clone ID</b>            | R1M91                                                                                                                             |
| <b>Host species</b>        | Rabbit                                                                                                                            |
| <b>Tested applications</b> | IP: 1:20, WB: 1:500-1:1000                                                                                                        |
| <b>Species reactivity</b>  | Human                                                                                                                             |
| <b>Form</b>                | Liquid                                                                                                                            |
| <b>Storage buffer</b>      | 0.01M PBS, pH 7.4, 0.05% BSA, 50% Glycerol, 0.05% Sodium azide.                                                                   |
| <b>Concentration</b>       | 1 mg/ml                                                                                                                           |
| <b>Purity</b>              | >95% by SDS-PAGE.                                                                                                                 |
| <b>Clonality</b>           | Monoclonal                                                                                                                        |
| <b>Isotype</b>             | IgG                                                                                                                               |
| <b>Applications</b>        | IP, WB                                                                                                                            |
| <b>Target</b>              | MAPTL, Paired helical filament-tau, MTBT1, Microtubule-associated protein tau, TAU, Neurofibrillary tangle protein, MAPT, PHF-tau |
| <b>Purification</b>        | Protein A/G purified from cell culture supernatant.                                                                               |
| <b>Endotoxin level</b>     | Please contact with the lab for this information.                                                                                 |
| <b>Accession</b>           | P10636                                                                                                                            |

**Stability and Storage**

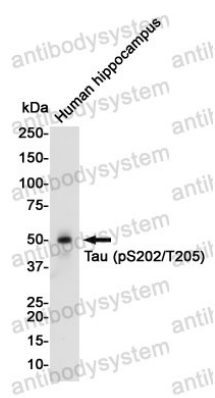
Use a manual defrost freezer and avoid repeated freeze thaw cycles. Store at 4 °C for frequent use. Store at -20 °C for twelve months from the date of receipt.

**Note**

For research use only.

## Data Image

---



Western blot

Western blot analysis of Tau (Phospho-Ser202/Thr205) in Human Fetal brain lysates using Phospho-Tau (Ser202/Thr205) antibody.