

Anti-CYP2D6 Antibody (R1M78)

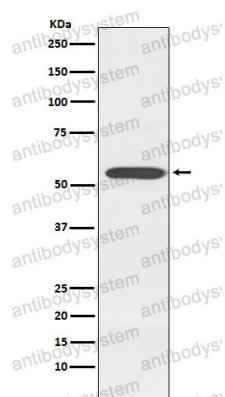
Summary

Catalog No.	RHC82302
Clone ID	R1M78
Host species	Rabbit
Tested applications	FCM: 1:20-1:100, IF: 1:50-1:200, IHC: 1:100-1:200, WB: 1:1000-1:2000
Species reactivity	Human
Form	Liquid
Storage buffer	0.01M PBS, pH 7.4, 0.05% BSA, 50% Glycerol, 0.05% Sodium azide.
Concentration	1 mg/ml
Purity	>95% by SDS-PAGE.
Clonality	Monoclonal
Isotype	IgG
Applications	FCM, IF, IHC, WB
Target	Debrisoquine 4-hydroxylase, CYP2DL1, Cytochrome P450 2D6, Cytochrome P450-DB1, CYP2D6, Cholesterol 25-hydroxylase, CYP2D6
Purification	Protein A/G purified from cell culture supernatant.
Endotoxin level	Please contact with the lab for this information.
Accession	P10635
Stability and Storage	Use a manual defrost freezer and avoid repeated freeze thaw cycles. Store at 4 °C for frequent use. Store at -20 °C for twelve months from the date of receipt.

Note

For research use only.

Data Image



Western blot

Western blot analysis of Cytochrome P450 2D6 expression in K562 cell lysate.