

Anti-DLAT/PDC-E2 Antibody (R1M69)

Summary

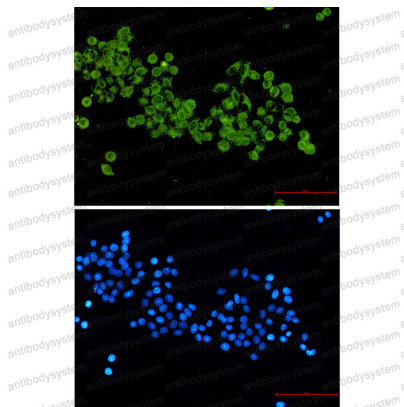
Catalog No.	RHC81201
Clone ID	R1M69
Host species	Rabbit
Tested applications	IF: 1:50-1:200, IP: 1:20, WB: 1:500-1:1000
Species reactivity	Human, Mouse, Rat, Hamster
Form	Liquid
Storage buffer	0.01M PBS, pH 7.4, 0.05% BSA, 50% Glycerol, 0.05% Sodium azide.
Concentration	1 mg/ml
Purity	>95% by SDS-PAGE.
Clonality	Monoclonal
Isotype	IgG
Applications	IF, IP, WB
Target	DLTA, M2 antigen complex 70 kDa subunit, 70 kDa mitochondrial autoantigen of primary biliary cirrhosis, Pyruvate dehydrogenase complex component E2, PDC-E2, DLAT, PBC, Dihydrolipoamide acetyltransferase component of pyruvate dehydrogenase complex, Dihydrolipoyllysine-residue acetyltransferase component of pyruvate dehydrogenase complex, mitochondrial, PDCE2
Purification	Protein A/G purified from cell culture supernatant.
Endotoxin level	Please contact with the lab for this information.
Accession	P10515

Stability and Storage

Use a manual defrost freezer and avoid repeated freeze thaw cycles. Store at 4 °C for frequent use. Store at -20 °C for twelve months from the date of receipt.

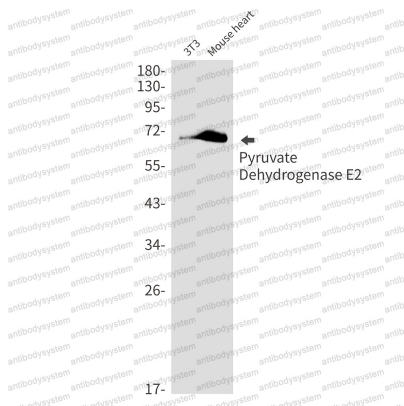
Note

For research use only.

Data Image

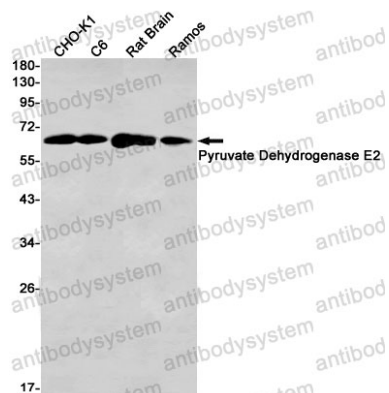
Immunofluorescence

Immunocytochemistry analysis of Pyruvate Dehydrogenase E2 (green) in HeLa using Pyruvate Dehydrogenase E2 antibody and DAPI (blue)



Western blot

Western blot analysis of Pyruvate Dehydrogenase E2 in 3T3, mouse heart lysates using Pyruvate Dehydrogenase E2 antibody.



Western blot

Western blot analysis of Pyruvate Dehydrogenase E2 in CHO-K1, C6, rat Brain, Ramos lysates using Pyruvate Dehydrogenase E2 antibody.