

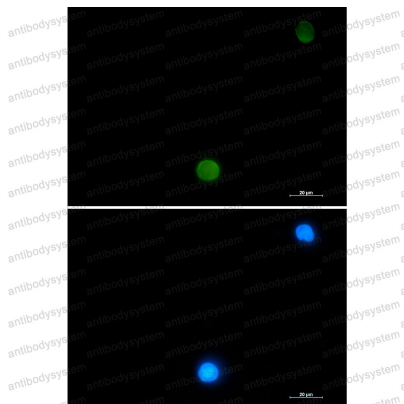
# Anti-UBB Antibody (R1M42)

## Summary

---

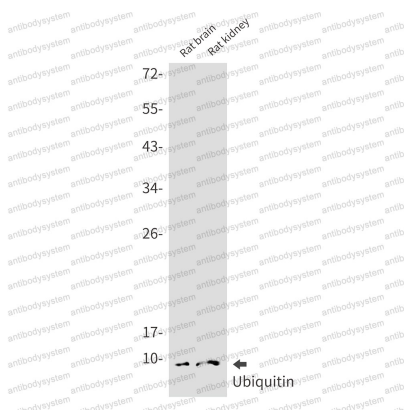
<b>Catalog No.</b>	RHC59202
<b>Clone ID</b>	R1M42
<b>Host species</b>	Rabbit
<b>Tested applications</b>	IF: 1:50-1:200, WB: 1:500-1:1000
<b>Species reactivity</b>	Human, Rat
<b>Form</b>	Liquid
<b>Storage buffer</b>	0.01M PBS, pH 7.4, 0.05% BSA, 50% Glycerol, 0.05% Sodium azide.
<b>Concentration</b>	1 mg/ml
<b>Purity</b>	>95% by SDS-PAGE.
<b>Clonality</b>	Monoclonal
<b>Isotype</b>	IgG
<b>Applications</b>	IF, WB
<b>Target</b>	Polyubiquitin-B, UBB
<b>Purification</b>	Protein A/G purified from cell culture supernatant.
<b>Endotoxin level</b>	Please contact with the lab for this information.
<b>Accession</b>	P0CG47
<b>Stability and Storage</b>	Use a manual defrost freezer and avoid repeated freeze thaw cycles. Store at 4 °C for frequent use. Store at -20 °C for twelve months from the date of receipt.
<b>Note</b>	For research use only.

## Data Image



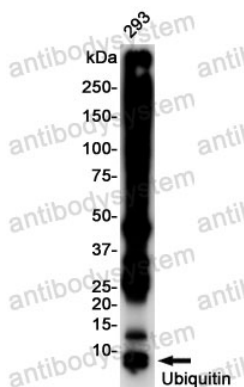
Immunofluorescence

Immunocytochemistry analysis of Ubiquitin (green) in CEM using Ubiquitin antibody, and DAPI (blue).



Western blot

Western blot analysis of Ubiquitin in rat brain, rat kidney lysates using Ubiquitin antibody.



Western blot

Western blot analysis of Ubiquitin in 293 lysates using Ubiquitin antibody