

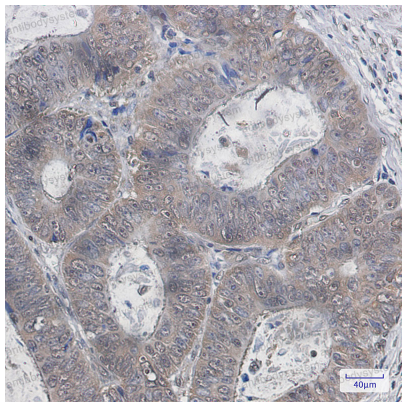
# Anti-UBB Antibody (R1M41)

## Summary

---

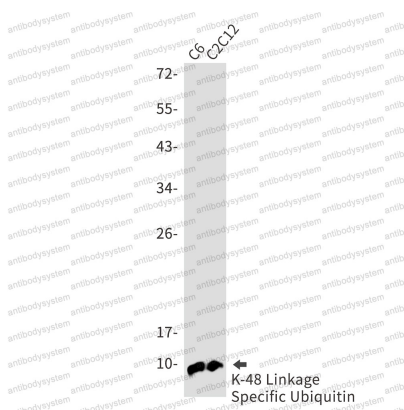
<b>Catalog No.</b>	RHC59205
<b>Clone ID</b>	R1M41
<b>Host species</b>	Rabbit
<b>Tested applications</b>	IF: 1:50-1:200, IHC: 1:50-1:100, WB: 1:500-1:1000
<b>Species reactivity</b>	Human, Mouse, Rat
<b>Form</b>	Liquid
<b>Storage buffer</b>	0.01M PBS, pH 7.4, 0.05% BSA, 50% Glycerol, 0.05% Sodium azide.
<b>Concentration</b>	1 mg/ml
<b>Purity</b>	>95% by SDS-PAGE.
<b>Clonality</b>	Monoclonal
<b>Isotype</b>	IgG
<b>Applications</b>	IF, IHC, WB
<b>Target</b>	Polyubiquitin-B, UBB
<b>Purification</b>	Protein A/G purified from cell culture supernatant.
<b>Endotoxin level</b>	Please contact with the lab for this information.
<b>Accession</b>	P0CG47
<b>Stability and Storage</b>	Use a manual defrost freezer and avoid repeated freeze thaw cycles. Store at 4 °C for frequent use. Store at -20 °C for twelve months from the date of receipt.
<b>Note</b>	For research use only.

## Data Image



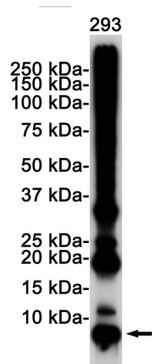
Immunohistochemical

Immunohistochemistry analysis of paraffin-embedded Human colon cancer using K48 Linkage Specific Ubiquitin antibody. High-pressure and temperature Sodium Citrate pH 6.0 was used for antigen retrieval.



Western blot

Western blot analysis of K48 Linkage Specific Ubiquitin in C6, C2C12 lysates using Ubiquitin K48 antibody.



Western blot

Western blot analysis of K48 Linkage Specific Ubiquitin in 293 lysates using K48 Linkage Specific Ubiquitin antibody.