

Anti-C4A Antibody (R1M39)

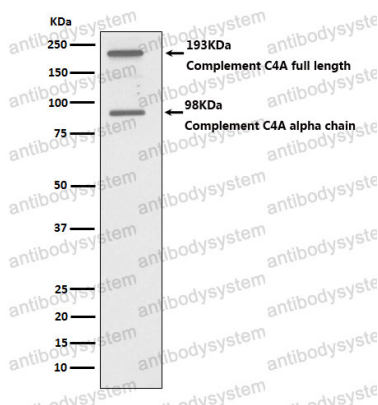
Summary

Catalog No.	RHC45304
Clone ID	R1M39
Host species	Rabbit
Tested applications	FCM: 1:20-1:100, IHC: 1:100-1:200, WB: 1:1000-1:2000
Species reactivity	Human
Form	Liquid
Storage buffer	0.01M PBS, pH 7.4, 0.05% BSA, 50% Glycerol, 0.05% Sodium azide.
Concentration	1 mg/ml
Purity	>95% by SDS-PAGE.
Clonality	Monoclonal
Isotype	IgG
Applications	FCM, IHC, WB
Target	CO4, CPAMD2, Acidic complement C4, C4A, Complement C4-A, C3 and PZP-like alpha-2-macroglobulin domain-containing protein 2
Purification	Protein A/G purified from cell culture supernatant.
Endotoxin level	Please contact with the lab for this information.
Accession	P0C0L4
Stability and Storage	Use a manual defrost freezer and avoid repeated freeze thaw cycles. Store at 4 °C for frequent use. Store at -20 °C for twelve months from the date of receipt.

Note

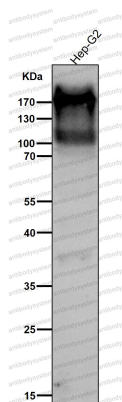
For research use only.

Data Image



Western blot

Western blot analysis of C4A expression in HepG2 cell lysate.



Western blot

All lanes use the Antibody at 1:1K dilution for 1 hour at room temperature.