

Anti-Cleaved-PARP1 Antibody (R1M31)

Summary

Catalog No.	RHC43702
Clone ID	R1M31
Host species	Rabbit
Tested applications	WB: 1:500-1:1000
Species reactivity	Human
Form	Liquid
Storage buffer	0.01M PBS, pH 7.4, 0.05% BSA, 50% Glycerol, 0.05% Sodium azide.
Concentration	1 mg/ml
Purity	>95% by SDS-PAGE.
Clonality	Monoclonal
Isotype	IgG
Applications	WB
Target	PARP-1, Protein poly-ADP-ribosyltransferase PARP1, DNA ADP-ribosyltransferase PARP1, Poly [ADP-ribose] polymerase 1, PPOL, Poly[ADP-ribose] synthase 1, ADPRT 1, ADP-ribosyltransferase diphtheria toxin-like 1, ADPRT, PARP1, NAD(+) ADP-ribosyltransferase 1, ARTD1
Purification	Protein A/G purified from cell culture supernatant.
Endotoxin level	Please contact with the lab for this information.
Accession	P09874

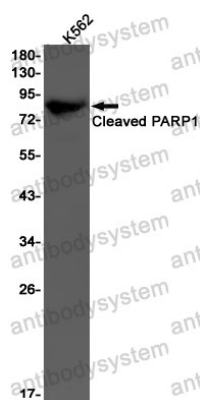
Stability and Storage

Use a manual defrost freezer and avoid repeated freeze thaw cycles. Store at 4 °C for frequent use. Store at -20 °C for twelve months from the date of receipt.

Note

For research use only.

Data Image



Western blot

Western blot analysis of Cleaved- PARP1 in K562 lysates using Cleaved-PARP1 antibody.