

Anti-DLD Antibody (R1M22)

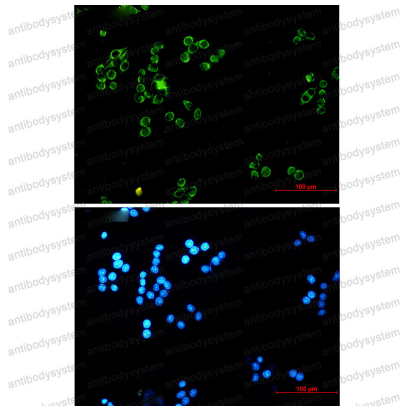
Summary

Catalog No.	RHC42301
Clone ID	R1M22
Host species	Rabbit
Tested applications	IF: 1:50-1:200, IHC: 1:50-1:100, WB: 1:500-1:1000
Species reactivity	Human, Mouse, Rat
Form	Liquid
Storage buffer	0.01M PBS, pH 7.4, 0.05% BSA, 50% Glycerol, 0.05% Sodium azide.
Concentration	1 mg/ml
Purity	>95% by SDS-PAGE.
Clonality	Monoclonal
Isotype	IgG
Applications	IF, IHC, WB
Target	Glycine cleavage system L protein, Dihydrolipoamide dehydrogenase, GCSL, DLD, PHE3, Dihydrolipoyl dehydrogenase, mitochondrial, LAD
Purification	Protein A/G purified from cell culture supernatant.
Endotoxin level	Please contact with the lab for this information.
Accession	P09622
Stability and Storage	Use a manual defrost freezer and avoid repeated freeze thaw cycles. Store at 4 °C for frequent use. Store at -20 °C for twelve months from the date of receipt.

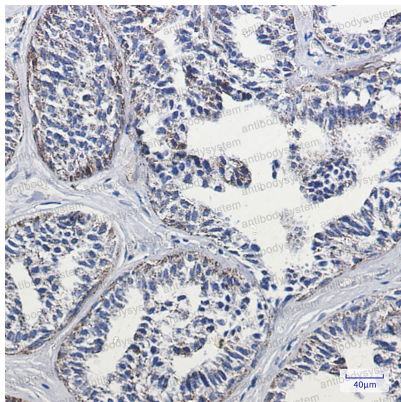
Note

For research use only.

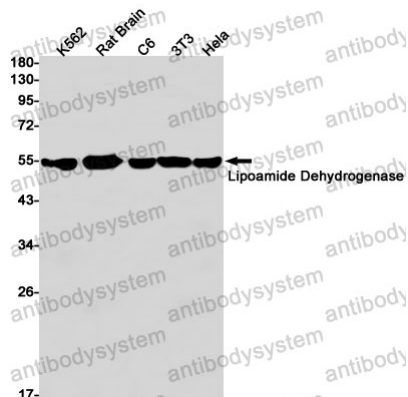
Data Image

**Immunofluorescence**

Immunocytochemistry analysis of Lipoamide Dehydrogenase (green) in Hela using Lipoamide Dehydrogenase antibody, and DAPI (blue).

**Immunohistochemical**

Immunohistochemistry analysis of paraffin-embedded Human breast cancer tissue using Lipoamide Dehydrogenase antibody. High-pressure and temperature Sodium Citrate pH 6.0 was used for antigen retrieval.



Western blot

Western blot analysis of Lipoamide Dehydrogenase in K562, rat Brain, C6, 3T3, HeLa lysates using Lipoamide Dehydrogenase antibody.