

# Anti-CD140b/PDGFRB Antibody (R1M20)

## Summary

---

<b>Catalog No.</b>	RHC42201
<b>Clone ID</b>	R1M20
<b>Host species</b>	Rabbit
<b>Tested applications</b>	IP: 1:20, WB: 1:500-1:1000
<b>Species reactivity</b>	Human, Mouse, Rat
<b>Form</b>	Liquid
<b>Storage buffer</b>	0.01M PBS, pH 7.4, 0.05% BSA, 50% Glycerol, 0.05% Sodium azide.
<b>Concentration</b>	1 mg/ml
<b>Purity</b>	>95% by SDS-PAGE.
<b>Clonality</b>	Monoclonal
<b>Isotype</b>	IgG
<b>Applications</b>	IP, WB
<b>Target</b>	Beta-type platelet-derived growth factor receptor, Beta platelet-derived growth factor receptor, CD140b, Platelet-derived growth factor receptor 1, PDGFRB, PDGF-R-beta, Platelet-derived growth factor receptor beta, CD140 antigen-like family member B, PDGFR-1, PDGFR1, PDGFR-beta, PDGFR
<b>Purification</b>	Protein A/G purified from cell culture supernatant.
<b>Endotoxin level</b>	Please contact with the lab for this information.
<b>Accession</b>	P09619

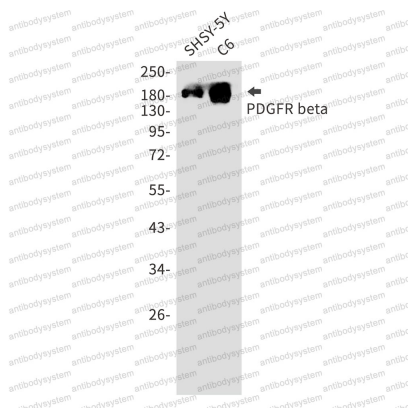
## Stability and Storage

Use a manual defrost freezer and avoid repeated freeze thaw cycles. Store at 4 °C for frequent use. Store at -20 °C for twelve months from the date of receipt.

## Note

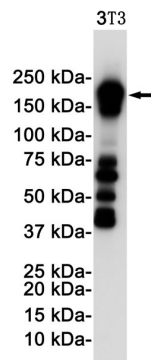
For research use only.

## Data Image



Western blot

Western blot analysis of PDGFR beta in SH-SY5Y, C6 lysates using PDGFR beta antibody.



Western blot

Western blot analysis of PDGFR beta in 3T3 lysates using PDGFR beta antibody.