

# Anti-ANXA4 Antibody (R1M11)

## Summary

---

<b>Catalog No.</b>	RHC41403
<b>Clone ID</b>	R1M11
<b>Host species</b>	Rabbit
<b>Tested applications</b>	IF: 1:50-1:200, IHC: 1:50-1:100, WB: 1:500-1:1000
<b>Species reactivity</b>	Human, Mouse, Rat, Hamster
<b>Form</b>	Liquid
<b>Storage buffer</b>	0.01M PBS, pH 7.4, 0.05% BSA, 50% Glycerol, 0.05% Sodium azide.
<b>Concentration</b>	1 mg/ml
<b>Purity</b>	>95% by SDS-PAGE.
<b>Clonality</b>	Monoclonal
<b>Isotype</b>	IgG
<b>Applications</b>	IF, IHC, WB
<b>Target</b>	Endonexin I, Carbohydrate-binding protein p33/p41, Annexin-4, PP4-X, 35-beta calcimedin, Chromobindin-4, Annexin A4, ANX4, PAP-II, Placental anticoagulant protein II, ANXA4, P32.5, Lipocortin IV, Protein II, Annexin IV
<b>Purification</b>	Protein A/G purified from cell culture supernatant.
<b>Endotoxin level</b>	Please contact with the lab for this information.
<b>Accession</b>	P09525

**Stability and Storage**

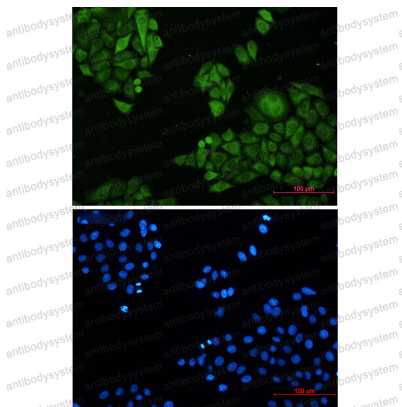
Use a manual defrost freezer and avoid repeated freeze thaw cycles. Store at 4 °C for frequent use. Store at -20 °C for twelve months from the date of receipt.

**Note**

For research use only.

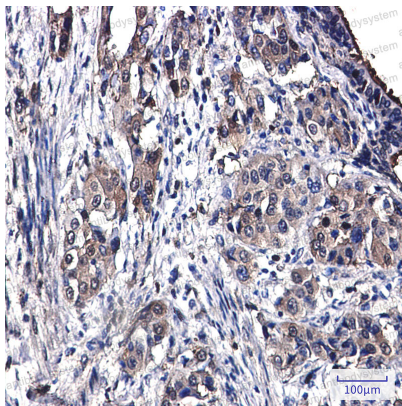
**Data Image**

---



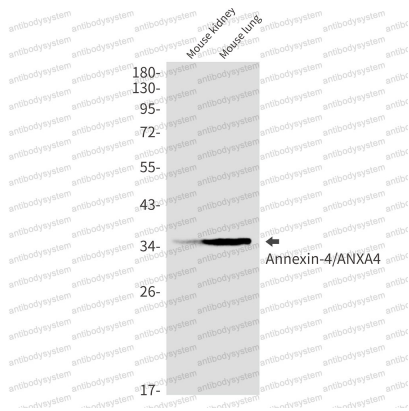
Immunofluorescence

Immunocytochemistry analysis of Annexin 4 (green) in Hela using Annexin 4 antibody, and DAPI(blue).



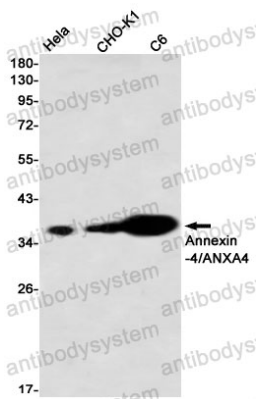
Immunohistochemical

Immunohistochemistry analysis of paraffin-embedded Human lung cancer using Annexin4/ANXA4 antibody. High-pressure and temperature Sodium Citrate pH 6.0 was used for antigen retrieval.



Western blot

Western blot analysis of Annexin4/ANXA4 in mouse kidney, mouse lung lysates using Annexin4/ANXA4 antibody.



Western blot

Western blot analysis of Annexin A4 in HeLa, CHO-K1, C6 lysates using Annexin A4 antibody