

Anti-FBP1 Antibody (R1M07)

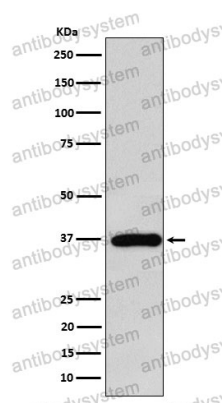
Summary

| | |
|------------------------------|---|
| Catalog No. | RHC40702 |
| Clone ID | R1M07 |
| Host species | Rabbit |
| Tested applications | IHC: 1:100-1:200, WB: 1:1000-1:2000 |
| Species reactivity | Human, Mouse, Rat |
| Form | Liquid |
| Storage buffer | 0.01M PBS, pH 7.4, 0.05% BSA, 50% Glycerol, 0.05% Sodium azide. |
| Concentration | 1 mg/ml |
| Purity | >95% by SDS-PAGE. |
| Clonality | Monoclonal |
| Isotype | IgG |
| Applications | IHC, WB |
| Target | FBPase 1, FBP1, Liver FBPase, D-fructose-1,6-bisphosphate 1-phosphohydrolase 1, FBP, Fructose-1,6-bisphosphatase 1 |
| Purification | Protein A/G purified from cell culture supernatant. |
| Endotoxin level | Please contact with the lab for this information. |
| Accession | P09467 |
| Stability and Storage | Use a manual defrost freezer and avoid repeated freeze thaw cycles. Store at 4 °C for frequent use. Store at -20 °C for twelve months from the date of receipt. |

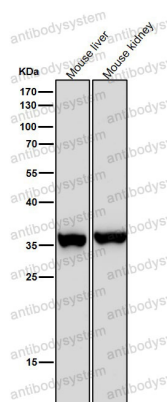
Note

For research use only.

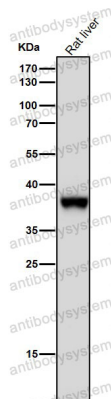
Data Image

**Western blot**

Western blot analysis of FBP1 expression in MCF7 cell lysate.

**Western blot**

All lanes use the Antibody at 1:2K dilution for 1 hour at room temperature.



Western blot

All lanes use the Antibody at 1:2K dilution for 1 hour at room temperature.