

Anti-PAEP/PP14 Antibody (R1M05)

Summary

Catalog No.	RHC40601
Clone ID	R1M05
Host species	Rabbit
Tested applications	WB: 1:1000-1:2000
Species reactivity	Human
Form	Liquid
Storage buffer	0.01M PBS, pH 7.4, 0.05% BSA, 50% Glycerol, 0.05% Sodium azide.
Concentration	1 mg/ml
Purity	>95% by SDS-PAGE.
Clonality	Monoclonal
Isotype	IgG
Applications	WB
Target	PAEG, Progestagen-associated endometrial protein, Pregnancy-associated endometrial alpha-2 globulin, GD, PEG, PAEP, Progesterone-associated endometrial protein, ZIF-1, PP14, Placental protein 14, Glycodelin, Zona-binding inhibitory factor-1
Purification	Protein A/G purified from cell culture supernatant.
Endotoxin level	Please contact with the lab for this information.
Accession	P09466

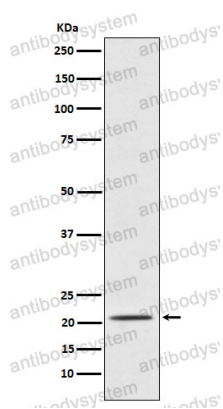
Stability and Storage

Use a manual defrost freezer and avoid repeated freeze thaw cycles. Store at 4 °C for frequent use. Store at -20 °C for twelve months from the date of receipt.

Note

For research use only.

Data Image



Western blot

Western blot analysis of Placental Protein 14 / PAEP expression in TPA-treated K562 cell lysate.