

# Anti-Gal1/LGALS1 Antibody (R1M03)

## Summary

---

<b>Catalog No.</b>	RHC40104
<b>Clone ID</b>	R1M03
<b>Host species</b>	Rabbit
<b>Tested applications</b>	IP: 1:20, WB: 1:500-1:1000
<b>Species reactivity</b>	Mouse, Rat, Hamster
<b>Form</b>	Liquid
<b>Storage buffer</b>	0.01M PBS, pH 7.4, 0.05% BSA, 50% Glycerol, 0.05% Sodium azide.
<b>Concentration</b>	1 mg/ml
<b>Purity</b>	>95% by SDS-PAGE.
<b>Clonality</b>	Monoclonal
<b>Isotype</b>	IgG
<b>Applications</b>	IP, WB
<b>Target</b>	HLBP14, Lactose-binding lectin 1, LGALS1, HBL, HPL, Beta-galactoside-binding lectin L-14-I, Gal-1, Lectin galactoside-binding soluble 1, Putative MAPK-activating protein PM12, S-Lac lectin 1, Galaptin, Galectin-1, 14 kDa laminin-binding protein, 14 kDa lectin
<b>Purification</b>	Protein A/G purified from cell culture supernatant.
<b>Endotoxin level</b>	Please contact with the lab for this information.
<b>Accession</b>	P09382

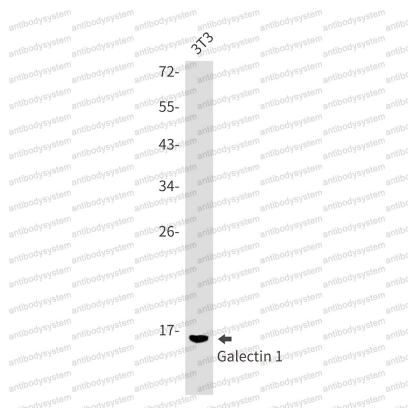
## Stability and Storage

Use a manual defrost freezer and avoid repeated freeze thaw cycles. Store at 4 °C for frequent use. Store at -20 °C for twelve months from the date of receipt.

## Note

For research use only.

## Data Image



Western blot

Western blot analysis of Galectin 1 in 3T3 lysates using Galectin 1 antibody.



Western blot

Western blot analysis of Galectin 1 in CHO-K1, C6 lysates using Galectin 1 antibody.