

Anti-Gal1/LGALS1 Antibody (R1M02)

Summary

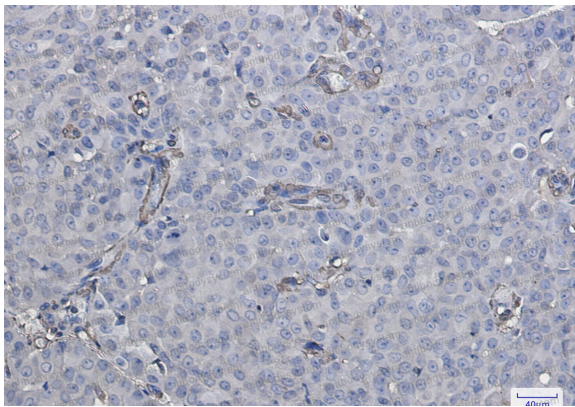
Catalog No.	RHC40103
Clone ID	R1M02
Host species	Rabbit
Tested applications	IHC: 1:50-1:100, IP: 1:20, WB: 1:500-1:1000
Species reactivity	Human, Rat
Form	Liquid
Storage buffer	0.01M PBS, pH 7.4, 0.05% BSA, 50% Glycerol, 0.05% Sodium azide.
Concentration	1 mg/ml
Purity	>95% by SDS-PAGE.
Clonality	Monoclonal
Isotype	IgG
Applications	IHC, IP, WB
Target	HLBP14, Lactose-binding lectin 1, LGALS1, HBL, HPL, Beta-galactoside-binding lectin L-14-I, Gal-1, Lectin galactoside-binding soluble 1, Putative MAPK-activating protein PM12, S-Lac lectin 1, Galaptin, Galectin-1, 14 kDa laminin-binding protein, 14 kDa lectin
Purification	Protein A/G purified from cell culture supernatant.
Endotoxin level	Please contact with the lab for this information.
Accession	P09382

Stability and Storage

Use a manual defrost freezer and avoid repeated freeze thaw cycles. Store at 4 °C for frequent use. Store at -20 °C for twelve months from the date of receipt.

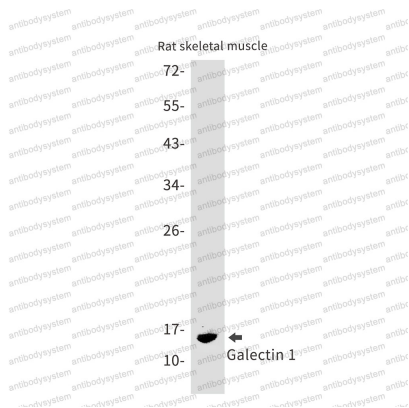
Note

For research use only.

Data Image

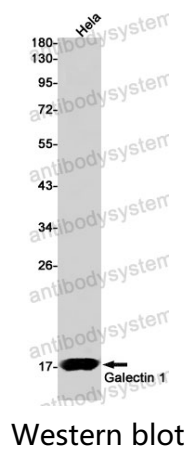
Immunohistochemical

Immunohistochemistry analysis of paraffin-embedded Human breast cancer using Galectin 1 antibody. High-pressure and temperature Sodium Citrate pH 6.0 was used for antigen retrieval.



Western blot

Western blot analysis of Galectin 1 in rat skeletal muscle lysates using Galectin 1 antibody.



Western blot analysis of Galectin 1 in Hela lysates using Galectin 1 antibody.