

Anti-CD48 Antibody (R1L99)

Summary

Catalog No.	RHC39801
Clone ID	R1L99
Host species	Rabbit
Tested applications	IF: 1:50-1:200, IHC: 1:100-1:200, IP: 1:20-1:50, WB: 1:1000-1:2000
Species reactivity	Human
Form	Liquid
Storage buffer	0.01M PBS, pH 7.4, 0.05% BSA, 50% Glycerol, 0.05% Sodium azide.
Concentration	1 mg/ml
Purity	>95% by SDS-PAGE.
Clonality	Monoclonal
Isotype	IgG
Applications	IF, IHC, IP, WB
Target	Signaling lymphocytic activation molecule 2, TCT.1, CD48 antigen, B-lymphocyte activation marker BLAST-1, BCM1, CD48, BLAST1, Leukocyte antigen MEM-102, SLAMF2, BCM1 surface antigen, SLAM family member 2
Purification	Protein A/G purified from cell culture supernatant.
Endotoxin level	Please contact with the lab for this information.
Accession	P09326

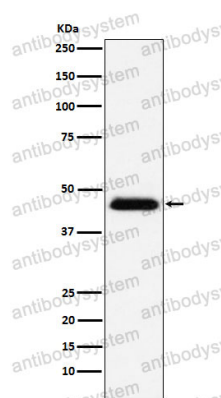
Stability and Storage

Use a manual defrost freezer and avoid repeated freeze thaw cycles. Store at 4 °C for frequent use. Store at -20 °C for twelve months from the date of receipt.

Note

For research use only.

Data Image



Western blot

Western blot analysis of CD48 expression in Raji cell lysate.