

Anti-POU2F2 Antibody (R1L92)

Summary

Catalog No.	RHC38402
Clone ID	R1L92
Host species	Rabbit
Tested applications	FCM: 1:20-1:100, IF: 1:50-1:200, IHC: 1:100-1:200, WB: 1:1000-1:2000
Species reactivity	Human
Form	Liquid
Storage buffer	0.01M PBS, pH 7.4, 0.05% BSA, 50% Glycerol, 0.05% Sodium azide.
Concentration	1 mg/ml
Purity	>95% by SDS-PAGE.
Clonality	Monoclonal
Isotype	IgG
Applications	FCM, IF, IHC, WB
Target	Oct-2, POU domain, class 2, transcription factor 2, OTF-2, OCT2, Octamer-binding protein 2, POU2F2, Lymphoid-restricted immunoglobulin octamer-binding protein NF-A2, Octamer-binding transcription factor 2, OTF2
Purification	Protein A/G purified from cell culture supernatant.
Endotoxin level	Please contact with the lab for this information.
Accession	P09086

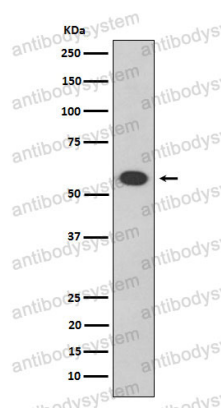
Stability and Storage

Use a manual defrost freezer and avoid repeated freeze thaw cycles. Store at 4 °C for frequent use. Store at -20 °C for twelve months from the date of receipt.

Note

For research use only.

Data Image



Western blot

Western blot analysis of Oct-2 expression in Daudi cell lysate.