

Anti-CD63 Antibody (R1L88)

Summary

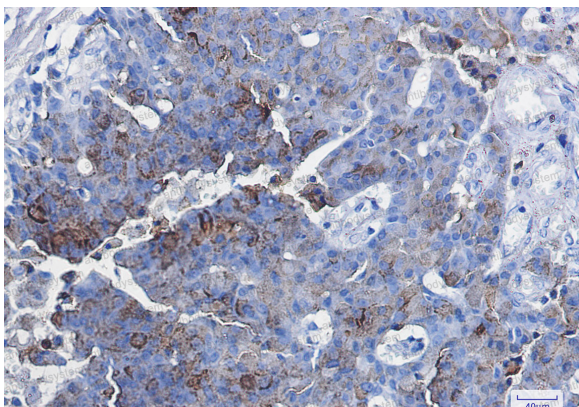
Catalog No.	RHC37601
Clone ID	R1L88
Host species	Rabbit
Tested applications	IHC: 1:50-1:100, WB: 1:500-1:1000
Species reactivity	Human
Form	Liquid
Storage buffer	0.01M PBS, pH 7.4, 0.05% BSA, 50% Glycerol, 0.05% Sodium azide.
Concentration	1 mg/ml
Purity	>95% by SDS-PAGE.
Clonality	Monoclonal
Isotype	IgG
Applications	IHC, WB
Target	Ocular melanoma-associated antigen, TSPAN30, CD63 antigen, LAMP-3, Tetraspanin-30, OMA81H, Lysosomal-associated membrane protein 3, Tspan-30, Granulophysin, MLA1, Melanoma-associated antigen ME491, CD63
Purification	Protein A/G purified from cell culture supernatant.
Endotoxin level	Please contact with the lab for this information.
Accession	P08962

Stability and Storage

Use a manual defrost freezer and avoid repeated freeze thaw cycles. Store at 4 °C for frequent use. Store at -20 °C for twelve months from the date of receipt.

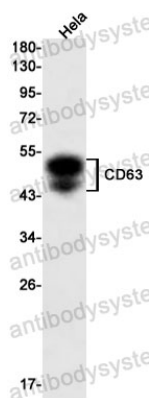
Note

For research use only.

Data Image

Immunohistochemical

Immunohistochemistry analysis of paraffin-embedded Human breast cancer using CD63 antibody. High-pressure and temperature Sodium Citrate pH 6.0 was used for antigen retrieval.



Western blot

Western blot analysis of CD63 in Hela lysates using CD63 antibody.