

Anti-RPSA Antibody (R1L86)

Summary

Catalog No.	RHC36801
Clone ID	R1L86
Host species	Rabbit
Tested applications	IP: 1:20, WB: 1:500-1:1000
Species reactivity	Human, Mouse, Rat
Form	Liquid
Storage buffer	0.01M PBS, pH 7.4, 0.05% BSA, 50% Glycerol, 0.05% Sodium azide.
Concentration	1 mg/ml
Purity	>95% by SDS-PAGE.
Clonality	Monoclonal
Isotype	IgG
Applications	IP, WB
Target	LAMBR, 37LRP, LBP/p40, Multidrug resistance-associated protein MGr1-Ag, Colon carcinoma laminin-binding protein, LamR, 67 kDa laminin receptor, NEM/1CHD4, Laminin receptor 1, Small ribosomal subunit protein uS2, Laminin-binding protein precursor p40, 40S ribosomal protein SA, 37/67 kDa laminin receptor, 67LR, 37 kDa laminin receptor precursor, RPSA, LRP/LR, LAMR1
Purification	Protein A/G purified from cell culture supernatant.
Endotoxin level	Please contact with the lab for this information.
Accession	P08865

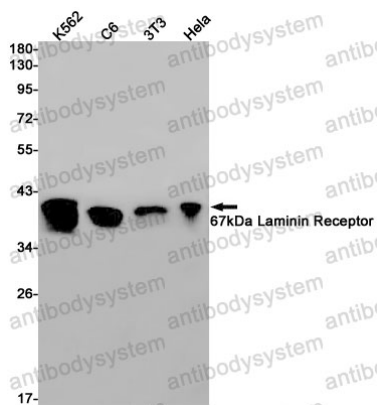
Stability and Storage

Use a manual defrost freezer and avoid repeated freeze thaw cycles. Store at 4 °C for frequent use. Store at -20 °C for twelve months from the date of receipt.

Note

For research use only.

Data Image



Western blot

Western blot analysis of 67kDa Laminin Receptor in K562, C6, 3T3, HeLa lysates using 67kDa Laminin Receptor antibody.