

# Anti-RPSA Antibody (R1L85)

## Summary

---

<b>Catalog No.</b>	RHC36802
<b>Clone ID</b>	R1L85
<b>Host species</b>	Rabbit
<b>Tested applications</b>	FCM: 1:20-1:100, IF: 1:50-1:200, IHC: 1:100-1:200, IP: 1:20-1:50, WB: 1:1000-1:2000
<b>Species reactivity</b>	Human, Mouse, Rat
<b>Form</b>	Liquid
<b>Storage buffer</b>	0.01M PBS, pH 7.4, 0.05% BSA, 50% Glycerol, 0.05% Sodium azide.
<b>Concentration</b>	1 mg/ml
<b>Purity</b>	>95% by SDS-PAGE.
<b>Clonality</b>	Monoclonal
<b>Isotype</b>	IgG
<b>Applications</b>	FCM, IF, IHC, IP, WB
<b>Target</b>	LAMBR, 37LRP, LBP/p40, Multidrug resistance-associated protein MGr1-Ag, Colon carcinoma laminin-binding protein, LamR, 67 kDa laminin receptor, NEM/1CHD4, Laminin receptor 1, Small ribosomal subunit protein uS2, Laminin-binding protein precursor p40, 40S ribosomal protein SA, 37/67 kDa laminin receptor, 67LR, 37 kDa laminin receptor precursor, RPSA, LRP/LR, LAMR1
<b>Purification</b>	Protein A/G purified from cell culture supernatant.
<b>Endotoxin level</b>	Please contact with the lab for this information.

## Recombinant Proteins &amp; Antibodies

**Accession**

P08865

**Stability and Storage**

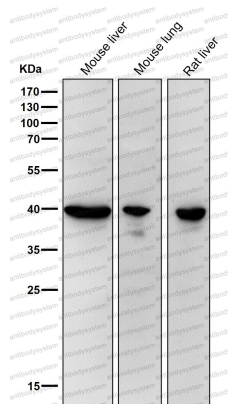
Use a manual defrost freezer and avoid repeated freeze thaw cycles. Store at 4 °C for frequent use. Store at -20 °C for twelve months from the date of receipt.

**Note**

For research use only.

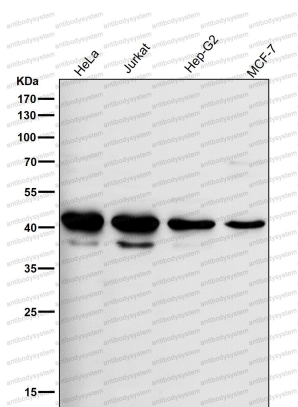
## Data Image

---



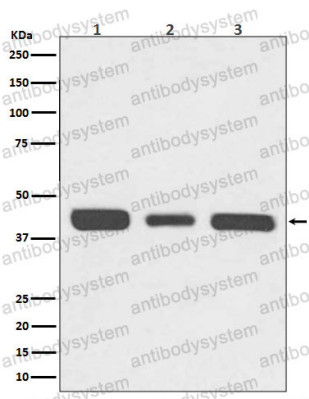
Western blot

All lanes use the Antibody at 1:2K dilution for 1 hour at room temperature.



Western blot

All lanes use the Antibody at 1:2K dilution for 1 hour at room temperature.



Western blot

Western blot analysis of 67kDa Laminin Receptor expression in (1) HeLa cell lysate; (2) NIH/3T3 cell lysate; (3) PC-12 cell lysate.