

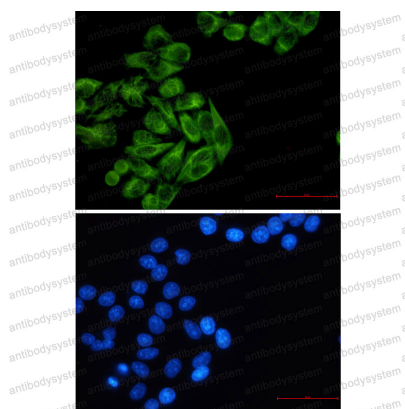
Anti-KRT7 Antibody (R1L80)

Summary

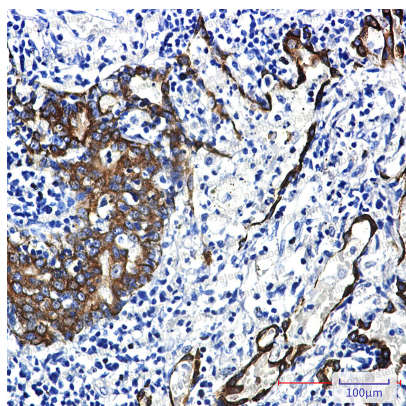
| | |
|------------------------------|---|
| Catalog No. | RHC36101 |
| Clone ID | R1L80 |
| Host species | Rabbit |
| Tested applications | IF: 1:50-1:200, IHC: 1:50-1:100, IP: 1:20, WB: 1:500-1:1000 |
| Species reactivity | Human |
| Form | Liquid |
| Storage buffer | 0.01M PBS, pH 7.4, 0.05% BSA, 50% Glycerol, 0.05% Sodium azide. |
| Concentration | 1 mg/ml |
| Purity | >95% by SDS-PAGE. |
| Clonality | Monoclonal |
| Isotype | IgG |
| Applications | IF, IHC, IP, WB |
| Target | Cytokeratin-7, Keratin-7, Type-II keratin Kb7, SCL, CK-7, Sarcolectin, KRT7, K7, Keratin, type II cytoskeletal 7 |
| Purification | Protein A/G purified from cell culture supernatant. |
| Endotoxin level | Please contact with the lab for this information. |
| Accession | P08729 |
| Stability and Storage | Use a manual defrost freezer and avoid repeated freeze thaw cycles. Store at 4 °C for frequent use. Store at -20 °C for twelve months from the date of receipt. |

Note

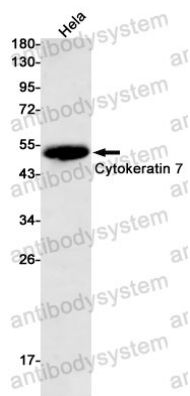
For research use only.

Data Image**Immunofluorescence**

Immunocytochemistry analysis of Cytokeratin 7 (green) in Hela using Cytokeratin 7 antibody, and DAPI (blue)

**Immunohistochemical**

Immunohistochemistry analysis of paraffin-embedded Human lung cancer using Cytokeratin 7 antibody. High-pressure and temperature Sodium Citrate pH 6.0 was used for antigen retrieval.



Western blot

Western blot analysis of Cytokeratin 7 in HeLa lysates using Cytokeratin 7 antibody.