

# Anti-Phospho-VIM/Vimentin (Ser56) Antibody (R1L74)

## Summary

---

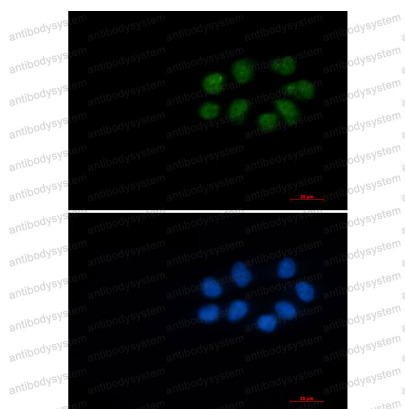
<b>Catalog No.</b>	RHC35306
<b>Clone ID</b>	R1L74
<b>Host species</b>	Rabbit
<b>Tested applications</b>	IF: 1:50-1:200, IP: 1:20, WB: 1:500-1:1000
<b>Species reactivity</b>	Human
<b>Form</b>	Liquid
<b>Storage buffer</b>	0.01M PBS, pH 7.4, 0.05% BSA, 50% Glycerol, 0.05% Sodium azide.
<b>Concentration</b>	1 mg/ml
<b>Purity</b>	>95% by SDS-PAGE.
<b>Clonality</b>	Monoclonal
<b>Isotype</b>	IgG
<b>Applications</b>	IF, IP, WB
<b>Target</b>	Vimentin, VIM
<b>Purification</b>	Protein A/G purified from cell culture supernatant.
<b>Endotoxin level</b>	Please contact with the lab for this information.
<b>Accession</b>	P08670

**Stability and Storage**

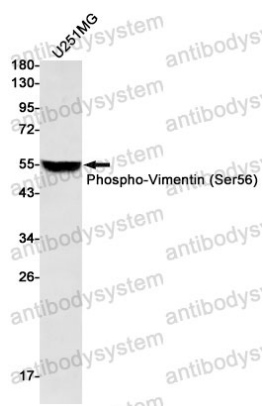
Use a manual defrost freezer and avoid repeated freeze thaw cycles. Store at 4 °C for frequent use. Store at -20 °C for twelve months from the date of receipt.

**Note**

For research use only.

**Data Image**

Immunofluorescence



Western blot

Immunocytochemistry analysis of Phospho-Vimentin (Ser56) (green) in Hela using Phospho-Vimentin (Ser56) antibody, and DAPI(blue).

Western blot analysis of Phospho-Vimentin (Ser56) in U251MG lysates using Phospho-Vimentin (Ser56) antibody.