

Anti-INHBA Antibody (R1L63)

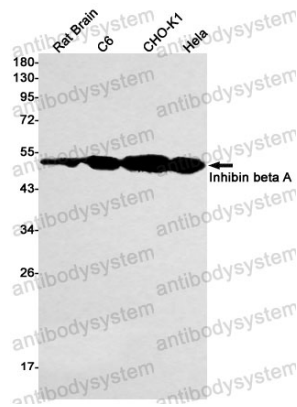
Summary

Catalog No.	RHC33103
Clone ID	R1L63
Host species	Rabbit
Tested applications	WB: 1:500-1:1000
Species reactivity	Human, Rat, Hamster
Form	Liquid
Storage buffer	0.01M PBS, pH 7.4, 0.05% BSA, 50% Glycerol, 0.05% Sodium azide.
Concentration	1 mg/ml
Purity	>95% by SDS-PAGE.
Clonality	Monoclonal
Isotype	IgG
Applications	WB
Target	EDF, Erythroid differentiation protein, Activin beta-A chain, INHBA, Inhibin beta A chain
Purification	Protein A/G purified from cell culture supernatant.
Endotoxin level	Please contact with the lab for this information.
Accession	P08476
Stability and Storage	Use a manual defrost freezer and avoid repeated freeze thaw cycles. Store at 4 °C for frequent use. Store at -20 °C for twelve months from the date of receipt.

Note

For research use only.

Data Image



Western blot

Western blot analysis of Inhibin beta A in rat Brain, C6, CHO-K1, Hela lysates using Inhibin beta A antibody.