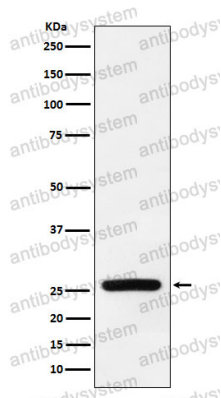


Anti-SOD3 Antibody (R1L59)

Summary

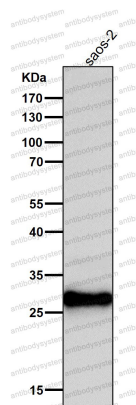
Catalog No.	RHC32601
Clone ID	R1L59
Host species	Rabbit
Tested applications	IHC: 1:100-1:200, WB: 1:1000-1:2000
Species reactivity	Human
Form	Liquid
Storage buffer	0.01M PBS, pH 7.4, 0.05% BSA, 50% Glycerol, 0.05% Sodium azide.
Concentration	1 mg/ml
Purity	>95% by SDS-PAGE.
Clonality	Monoclonal
Isotype	IgG
Applications	IHC, WB
Target	Extracellular superoxide dismutase [Cu-Zn], SOD3, EC-SOD
Purification	Protein A/G purified from cell culture supernatant.
Endotoxin level	Please contact with the lab for this information.
Accession	P08294
Stability and Storage	Use a manual defrost freezer and avoid repeated freeze thaw cycles. Store at 4 °C for frequent use. Store at -20 °C for twelve months from the date of receipt.
Note	For research use only.

Data Image



Western blot

Western blot analysis of Superoxide Dismutase 3 expression in human fetal heart lysate.



Western blot

All lanes use the Antibody at 1:1K dilution for 1 hour at room temperature.