

Anti-MMP2 Antibody (R1L57)

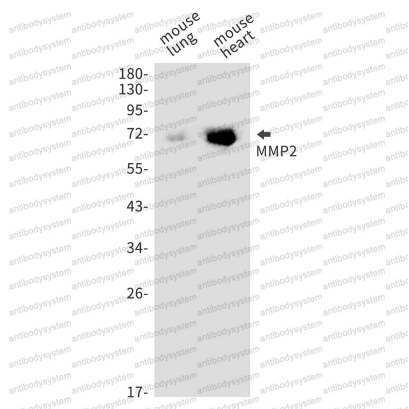
Summary

Catalog No.	RHC32303
Clone ID	R1L57
Host species	Rabbit
Tested applications	IF: 1:50-1:200, WB: 1:500-1:1000
Species reactivity	Mouse
Form	Liquid
Storage buffer	0.01M PBS, pH 7.4, 0.05% BSA, 50% Glycerol, 0.05% Sodium azide.
Concentration	1 mg/ml
Purity	>95% by SDS-PAGE.
Clonality	Monoclonal
Isotype	IgG
Applications	IF, WB
Target	72 kDa gelatinase, Matrix metalloproteinase-2, Gelatinase A, TBE-1, MMP2, CLG4A, 72 kDa type IV collagenase, MMP-2
Purification	Protein A/G purified from cell culture supernatant.
Endotoxin level	Please contact with the lab for this information.
Accession	P08253
Stability and Storage	Use a manual defrost freezer and avoid repeated freeze thaw cycles. Store at 4 °C for frequent use. Store at -20 °C for twelve months from the date of receipt.

Note

For research use only.

Data Image



Western blot

Western blot analysis of MMP2 in mouse lung, mouse heart lysates using MMP2 antibody.