

Anti-PFKM Antibody (R1L52)

Summary

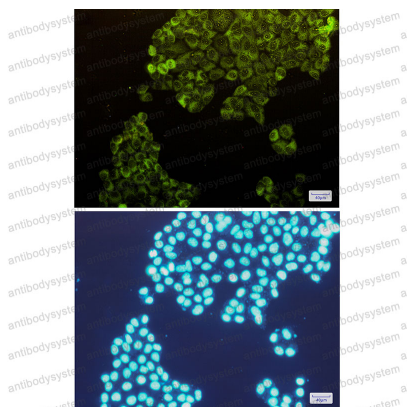
Catalog No.	RHC31701
Clone ID	R1L52
Host species	Rabbit
Tested applications	IF: 1:50-1:200, WB: 1:500-1:1000
Species reactivity	Human, Mouse, Rat
Form	Liquid
Storage buffer	0.01M PBS, pH 7.4, 0.05% BSA, 50% Glycerol, 0.05% Sodium azide.
Concentration	1 mg/ml
Purity	>95% by SDS-PAGE.
Clonality	Monoclonal
Isotype	IgG
Applications	IF, WB
Target	ATP-dependent 6-phosphofructokinase, muscle type, PFK-M, Phosphofructo-1-kinase isozyme A, 6-phosphofructokinase type A, PFK-A, PFKM, PFKX, ATP-PFK, Phosphohexokinase
Purification	Protein A/G purified from cell culture supernatant.
Endotoxin level	Please contact with the lab for this information.
Accession	P08237

Stability and Storage

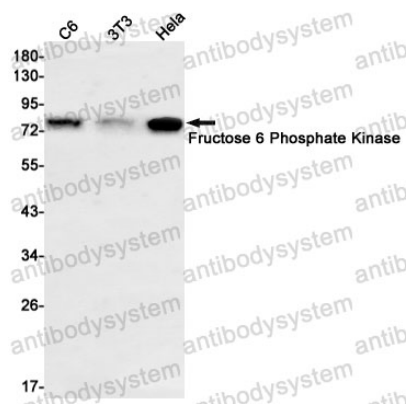
Use a manual defrost freezer and avoid repeated freeze thaw cycles. Store at 4 °C for frequent use. Store at -20 °C for twelve months from the date of receipt.

Note

For research use only.

Data Image

Immunofluorescence



Western blot

Immunocytochemistry analysis of Fructose 6 Phosphate Kinase(green) in HeLa using Fructose 6 Phosphate Kinase antibody, and DAPI(blue)

Western blot analysis of Fructose 6 Phosphate Kinase in C6, 3T3, HeLa lysates using Fructose 6 Phosphate Kinase antibody.