

Anti-PFKM Antibody (R1L51)

Summary

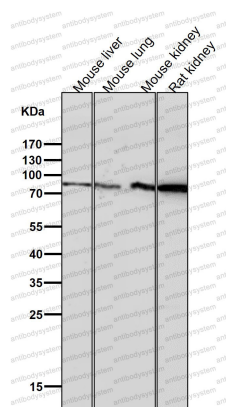
| | |
|----------------------------|--|
| Catalog No. | RHC31702 |
| Clone ID | R1L51 |
| Host species | Rabbit |
| Tested applications | FCM: 1:20-1:100, IF: 1:50-1:200, WB: 1:1000-1:2000 |
| Species reactivity | Human, Mouse, Rat |
| Form | Liquid |
| Storage buffer | 0.01M PBS, pH 7.4, 0.05% BSA, 50% Glycerol, 0.05% Sodium azide. |
| Concentration | 1 mg/ml |
| Purity | >95% by SDS-PAGE. |
| Clonality | Monoclonal |
| Isotype | IgG |
| Applications | FCM, IF, WB |
| Target | ATP-dependent 6-phosphofructokinase, muscle type, PFK-M, Phosphofructo-1-kinase isozyme A, 6-phosphofructokinase type A, PFK-A, PFKM, PFKX, ATP-PFK, Phosphohexokinase |
| Purification | Protein A/G purified from cell culture supernatant. |
| Endotoxin level | Please contact with the lab for this information. |
| Accession | P08237 |

Stability and Storage

Use a manual defrost freezer and avoid repeated freeze thaw cycles. Store at 4 °C for frequent use. Store at -20 °C for twelve months from the date of receipt.

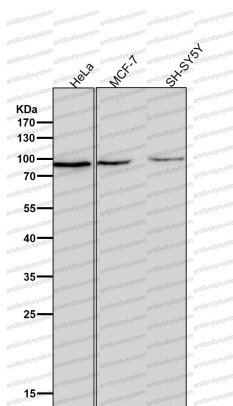
Note

For research use only.

Data Image

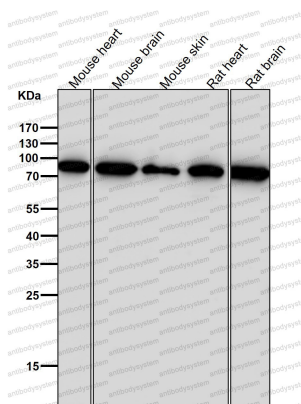
Western blot

All lanes use the Antibody at 1:2K dilution for 1 hour at room temperature.



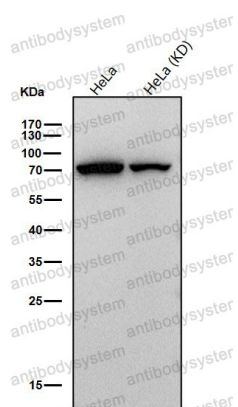
Western blot

All lanes use the Antibody at 1:2K dilution for 1 hour at room temperature.



Western blot

All lanes use the Antibody at 1:2K dilution for 1 hour at room temperature.



Western blot

All lanes use the Antibody at 1:1K dilution for 1 hour at room temperature.