

# Anti-ANXA6 Antibody (R1L42)

## Summary

---

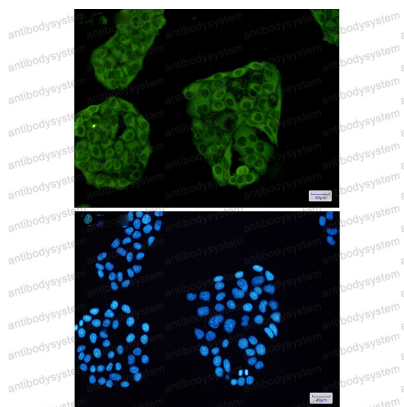
<b>Catalog No.</b>	RHC30304
<b>Clone ID</b>	R1L42
<b>Host species</b>	Rabbit
<b>Tested applications</b>	IF: 1:50-1:200, WB: 1:500-1:1000
<b>Species reactivity</b>	Human, Mouse, Rat
<b>Form</b>	Liquid
<b>Storage buffer</b>	0.01M PBS, pH 7.4, 0.05% BSA, 50% Glycerol, 0.05% Sodium azide.
<b>Concentration</b>	1 mg/ml
<b>Purity</b>	>95% by SDS-PAGE.
<b>Clonality</b>	Monoclonal
<b>Isotype</b>	IgG
<b>Applications</b>	IF, WB
<b>Target</b>	Chromobindin-20, ANX6, ANXA6, Annexin A6, CPB-II, p70, Protein III, Lipocortin VI, 67 kDa calelectrin, Calphobindin-II, p68, Annexin-6, Annexin VI
<b>Purification</b>	Protein A/G purified from cell culture supernatant.
<b>Endotoxin level</b>	Please contact with the lab for this information.
<b>Accession</b>	P08133

**Stability and Storage**

Use a manual defrost freezer and avoid repeated freeze thaw cycles. Store at 4 °C for frequent use. Store at -20 °C for twelve months from the date of receipt.

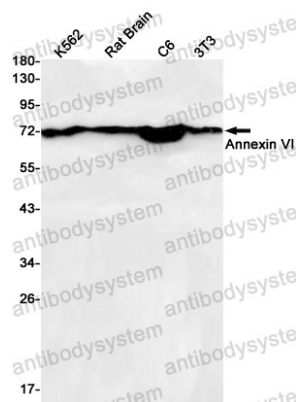
**Note**

For research use only.

**Data Image**

Immunofluorescence

Immunocytochemistry analysis of Annexin VI(green) in Hela using Annexin VI antibody, and DAPI(blue)



Western blot

Western blot analysis of Annexin VI in K562, rat Brain, C6, 3T3 lysates using Annexin VI antibody.