

# Anti-ANXA6 Antibody (R1L41)

## Summary

---

<b>Catalog No.</b>	RHC30303
<b>Clone ID</b>	R1L41
<b>Host species</b>	Rabbit
<b>Tested applications</b>	IF: 1:50-1:200, IHC: 1:50-1:100, IP: 1:20, WB: 1:500-1:1000
<b>Species reactivity</b>	Human, Rat
<b>Form</b>	Liquid
<b>Storage buffer</b>	0.01M PBS, pH 7.4, 0.05% BSA, 50% Glycerol, 0.05% Sodium azide.
<b>Concentration</b>	1 mg/ml
<b>Purity</b>	>95% by SDS-PAGE.
<b>Clonality</b>	Monoclonal
<b>Isotype</b>	IgG
<b>Applications</b>	IF, IHC, IP, WB
<b>Target</b>	Chromobindin-20, ANX6, ANXA6, Annexin A6, CPB-II, p70, Protein III, Lipocortin VI, 67 kDa calelectrin, Calphobindin-II, p68, Annexin-6, Annexin VI
<b>Purification</b>	Protein A/G purified from cell culture supernatant.
<b>Endotoxin level</b>	Please contact with the lab for this information.
<b>Accession</b>	P08133

**Stability and Storage**

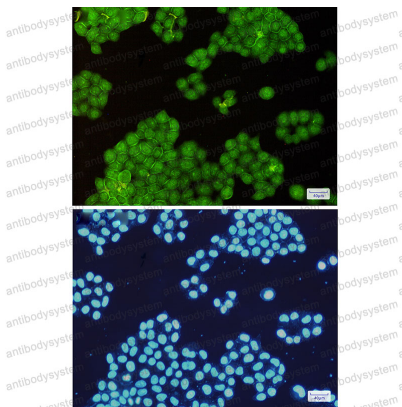
Use a manual defrost freezer and avoid repeated freeze thaw cycles. Store at 4 °C for frequent use. Store at -20 °C for twelve months from the date of receipt.

**Note**

For research use only.

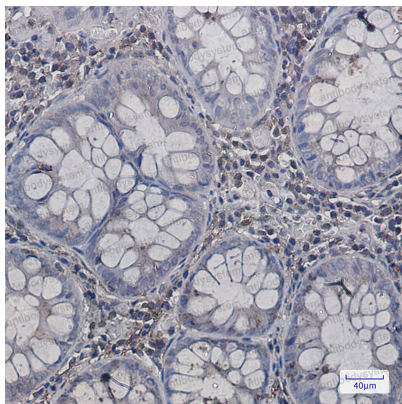
**Data Image**

---



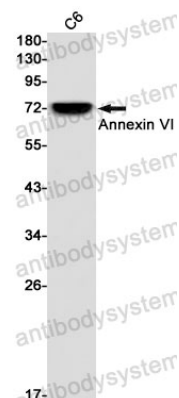
Immunofluorescence

Immunocytochemistry analysis of Annexin VI(green) in Hela using Annexin VI antibody, and DAPI(blue)



Immunohistochemical

Immunohistochemistry analysis of paraffin-embedded Human colon cancer using Annexin VI antibody. High-pressure and temperature Sodium Citrate pH 6.0 was used for antigen retrieval.



Western blot

Western blot analysis of Annexin VI in C6 lysates using Annexin VI antibody.