

Anti-Phospho-CD221/IGF1R (Tyr1166) Antibody (R1L36)

Summary

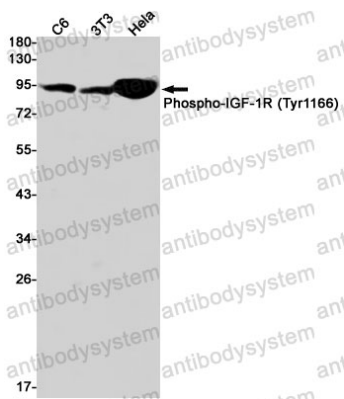
| | |
|----------------------------|--|
| Catalog No. | RHC29902 |
| Clone ID | R1L36 |
| Host species | Rabbit |
| Tested applications | IP: 1:20, WB: 1:500-1:1000 |
| Species reactivity | Human, Mouse, Rat |
| Form | Liquid |
| Storage buffer | 0.01M PBS, pH 7.4, 0.05% BSA, 50% Glycerol, 0.05% Sodium azide. |
| Concentration | 1 mg/ml |
| Purity | >95% by SDS-PAGE. |
| Clonality | Monoclonal |
| Isotype | IgG |
| Applications | IP, WB |
| Target | CD221, Insulin-like growth factor 1 receptor, IGF1R, Insulin-like growth factor I receptor, IGF-I receptor |
| Purification | Protein A/G purified from cell culture supernatant. |
| Endotoxin level | Please contact with the lab for this information. |
| Accession | P08069 |

Stability and Storage

Use a manual defrost freezer and avoid repeated freeze thaw cycles. Store at 4 °C for frequent use. Store at -20 °C for twelve months from the date of receipt.

Note

For research use only.

Data Image

Western blot

Western blot analysis of Phospho-IGF1R (Tyr1166) in C6, 3T3, HeLa lysates using Phospho-IGF1 Receptor (Tyr1166) antibody.