

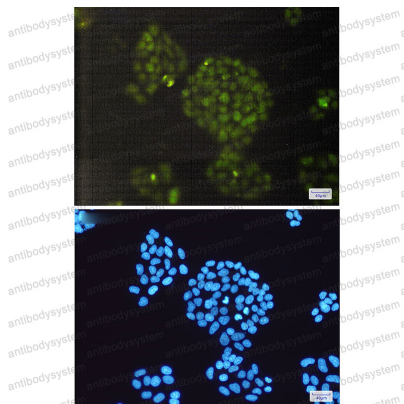
# Anti-ERCC1 Antibody (R1L30)

## Summary

---

<b>Catalog No.</b>	RHC29301
<b>Clone ID</b>	R1L30
<b>Host species</b>	Rabbit
<b>Tested applications</b>	IF: 1:50-1:200, WB: 1:500-1:1000
<b>Species reactivity</b>	Human, Mouse
<b>Form</b>	Liquid
<b>Storage buffer</b>	0.01M PBS, pH 7.4, 0.05% BSA, 50% Glycerol, 0.05% Sodium azide.
<b>Concentration</b>	1 mg/ml
<b>Purity</b>	>95% by SDS-PAGE.
<b>Clonality</b>	Monoclonal
<b>Isotype</b>	IgG
<b>Applications</b>	IF, WB
<b>Target</b>	ERCC1, DNA excision repair protein ERCC-1
<b>Purification</b>	Protein A/G purified from cell culture supernatant.
<b>Endotoxin level</b>	Please contact with the lab for this information.
<b>Accession</b>	P07992
<b>Stability and Storage</b>	Use a manual defrost freezer and avoid repeated freeze thaw cycles. Store at 4 °C for frequent use. Store at -20 °C for twelve months from the date of receipt.
<b>Note</b>	For research use only.

## Data Image



Immunofluorescence

Immunocytochemistry analysis of ERCC1(green) in HeLa using ERCC1 antibody, and DAPI(blue)



Western blot

Western blot analysis of ERCC1 in K562, 3T3, HeLa lysates using ERCC1 antibody.