

Anti-HSP90AA1 Antibody (R1L20)

Summary

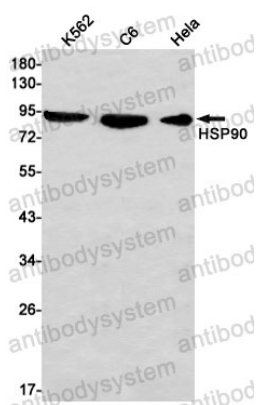
Catalog No.	RHC28102
Clone ID	R1L20
Host species	Rabbit
Tested applications	WB: 1:500-1:1000
Species reactivity	Human, Rat
Form	Liquid
Storage buffer	0.01M PBS, pH 7.4, 0.05% BSA, 50% Glycerol, 0.05% Sodium azide.
Concentration	1 mg/ml
Purity	>95% by SDS-PAGE.
Clonality	Monoclonal
Isotype	IgG
Applications	WB
Target	LPS-associated protein 2, Heat shock protein HSP 90-alpha, HSPCA, HSP90A, HSP 86, Lipopolysaccharide-associated protein 2, HSP86, HSP90AA1, Heat shock 86 kDa, Renal carcinoma antigen NY-REN-38, LAP-2, HSPC1
Purification	Protein A/G purified from cell culture supernatant.
Endotoxin level	Please contact with the lab for this information.
Accession	P07900

Stability and Storage

Use a manual defrost freezer and avoid repeated freeze thaw cycles. Store at 4 °C for frequent use. Store at -20 °C for twelve months from the date of receipt.

Note

For research use only.

Data Image

Western blot

Western blot analysis of HSP90 in K562, C6, HeLa lysates using Hsp90 alpha antibody.