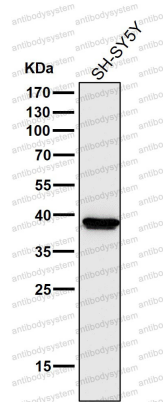


Anti-Cathepsin L/V/K/H Antibody (R1L12)

Summary

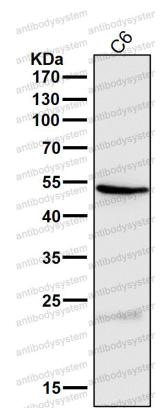
Catalog No.	RHC27302
Clone ID	R1L12
Host species	Rabbit
Tested applications	FCM: 1:20-1:100, IF: 1:50-1:200, IHC: 1:100-1:200, WB: 1:1000-1:2000
Species reactivity	Human, Mouse, Rat
Form	Liquid
Storage buffer	0.01M PBS, pH 7.4, 0.05% BSA, 50% Glycerol, 0.05% Sodium azide.
Concentration	1 mg/ml
Purity	>95% by SDS-PAGE.
Clonality	Monoclonal
Isotype	IgG
Applications	FCM, IF, IHC, WB
Target	CTSL1, MEP, Procathepsin L, Major excreted protein, Cathepsin L1, CTSL
Purification	Protein A/G purified from cell culture supernatant.
Endotoxin level	Please contact with the lab for this information.
Accession	P07711, O60911, P43235, P09668
Stability and Storage	Use a manual defrost freezer and avoid repeated freeze thaw cycles. Store at 4 °C for frequent use. Store at -20 °C for twelve months from the date of receipt.
Note	For research use only.

Data Image



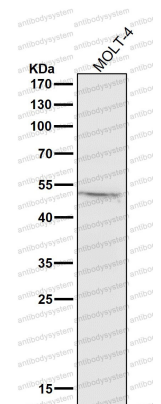
Western blot

All lanes use the Antibody at 1:2K dilution for 1 hour at room temperature.



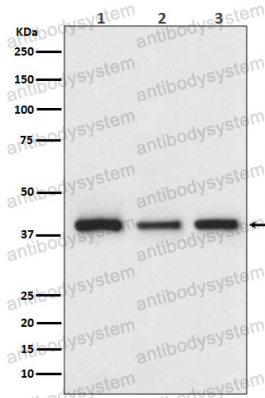
Western blot

All lanes use the Antibody at 1:2K dilution for 1 hour at room temperature.



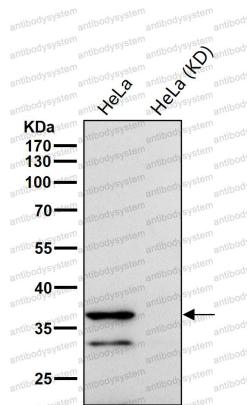
Western blot

All lanes use the Antibody at 1:2K dilution for 1 hour at room temperature.



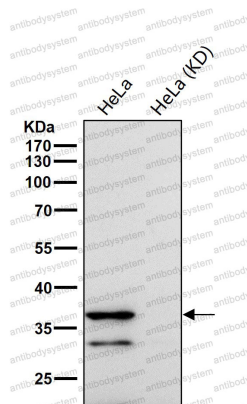
Western blot

Western blot analysis of Cathepsin L/V/K/H expression in (1) HepG2 cell lysate; (2) NIH/3T3 cell lysate; (3) PC-12 cell lysate;



Western blot

All lanes use the Antibody at 1:1K dilution for 1 hour at room temperature.



Western blot

All lanes use the Antibody at 1:1K dilution for 1 hour at room temperature.