

Anti-CAPN1 Antibody (R1L09)

Summary

Catalog No.	RHC25901
Clone ID	R1L09
Host species	Rabbit
Tested applications	FCM: 1:20-1:100, IF: 1:50-1:200, IHC: 1:100-1:200, WB: 1:1000-1:2000
Species reactivity	Human, Mouse, Rat
Form	Liquid
Storage buffer	0.01M PBS, pH 7.4, 0.05% BSA, 50% Glycerol, 0.05% Sodium azide.
Concentration	1 mg/ml
Purity	>95% by SDS-PAGE.
Clonality	Monoclonal
Isotype	IgG
Applications	FCM, IF, IHC, WB
Target	Calpain-1 catalytic subunit, CANPL1, Calpain-1 large subunit, CAPN1, muCANP, CANP 1, Micromolar-calpain, Cell proliferation-inducing gene 30 protein, Calpain mu-type, Calcium-activated neutral proteinase 1
Purification	Protein A/G purified from cell culture supernatant.
Endotoxin level	Please contact with the lab for this information.
Accession	P07384

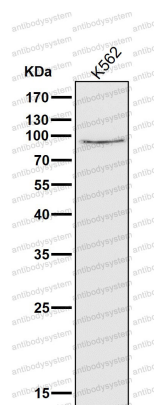
Stability and Storage

Use a manual defrost freezer and avoid repeated freeze thaw cycles. Store at 4 °C for frequent use. Store at -20 °C for twelve months from the date of receipt.

Note

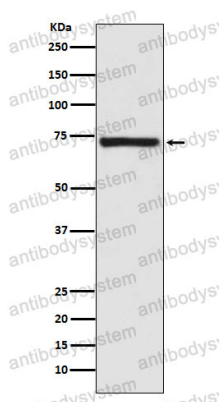
For research use only.

Data Image



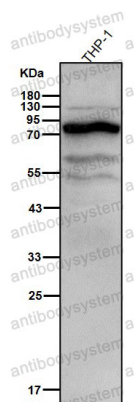
Western blot

All lanes use the Antibody at 1:1K dilution for 1 hour at room temperature.



Western blot

Western blot analysis of Calpain 1 expression in Human fetal kidney lysate.



Western blot

All lanes use the Antibody at 1:1K dilution for 1 hour at room temperature.