

Anti-ANXA2 Antibody (R1L07)

Summary

Catalog No.	RHC25404
Clone ID	R1L07
Host species	Rabbit
Tested applications	IP: 1:20, WB: 1:500-1:1000
Species reactivity	Human
Form	Liquid
Storage buffer	0.01M PBS, pH 7.4, 0.05% BSA, 50% Glycerol, 0.05% Sodium azide.
Concentration	1 mg/ml
Purity	>95% by SDS-PAGE.
Clonality	Monoclonal
Isotype	IgG
Applications	IP, WB
Target	Lipocortin II, Annexin A2, Calpactin-1 heavy chain, PAP-IV, p36, CAL1H, Calpactin I heavy chain, ANX2, ANX2L4, Protein I, Annexin-2, LPC2D, Annexin II, ANXA2, Placental anticoagulant protein IV, Chromobindin-8
Purification	Protein A/G purified from cell culture supernatant.
Endotoxin level	Please contact with the lab for this information.
Accession	P07355

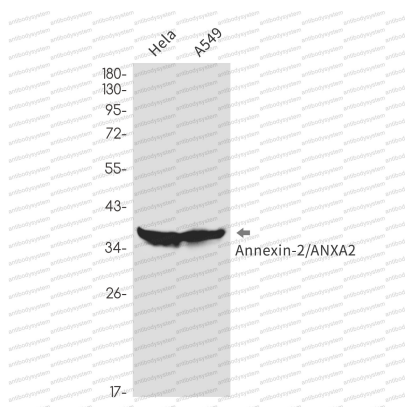
Stability and Storage

Use a manual defrost freezer and avoid repeated freeze thaw cycles. Store at 4 °C for frequent use. Store at -20 °C for twelve months from the date of receipt.

Note

For research use only.

Data Image



Western blot

Western blot analysis of Annexin2/ANXA2 in HeLa, A549 lysates using Annexin 2 antibody.