

Anti-FES Antibody (R1L03)

Summary

Catalog No.	RHC25101
Clone ID	R1L03
Host species	Rabbit
Tested applications	WB: 1:500-1:1000
Species reactivity	Human
Form	Liquid
Storage buffer	0.01M PBS, pH 7.4, 0.05% BSA, 50% Glycerol, 0.05% Sodium azide.
Concentration	1 mg/ml
Purity	>95% by SDS-PAGE.
Clonality	Monoclonal
Isotype	IgG
Applications	WB
Target	FES, p93c-fes, Tyrosine-protein kinase Fes/Fps, FPS, Feline sarcoma/Fujinami avian sarcoma oncogene homolog, Proto-oncogene c-Fes, Proto-oncogene c-Fps
Purification	Protein A/G purified from cell culture supernatant.
Endotoxin level	Please contact with the lab for this information.
Accession	P07332

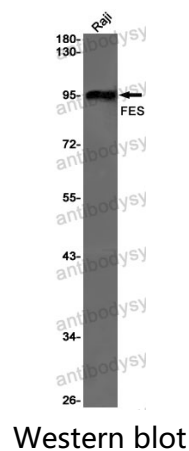
Stability and Storage

Use a manual defrost freezer and avoid repeated freeze thaw cycles. Store at 4 °C for frequent use. Store at -20 °C for twelve months from the date of receipt.

Note

For research use only.

Data Image



Western blot analysis of FES in Raji lysates using FES antibody.