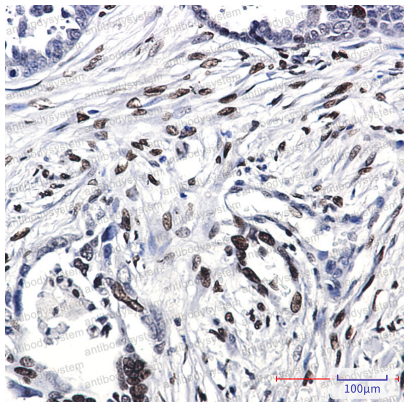


Anti-Histone H1.0 Antibody (R1L01)

Summary

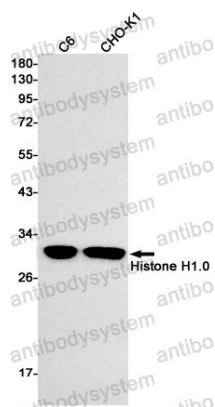
| | |
|------------------------------|---|
| Catalog No. | RHC24301 |
| Clone ID | R1L01 |
| Host species | Rabbit |
| Tested applications | IHC: 1:50-1:100, WB: 1:500-1:1000 |
| Species reactivity | Human, Rat, Hamster |
| Form | Liquid |
| Storage buffer | 0.01M PBS, pH 7.4, 0.05% BSA, 50% Glycerol, 0.05% Sodium azide. |
| Concentration | 1 mg/ml |
| Purity | >95% by SDS-PAGE. |
| Clonality | Monoclonal |
| Isotype | IgG |
| Applications | IHC, WB |
| Target | Histone H1(0), Histone H1.0, H1-0, H1FV, H1F0, Histone H1' |
| Purification | Protein A/G purified from cell culture supernatant. |
| Endotoxin level | Please contact with the lab for this information. |
| Accession | P07305 |
| Stability and Storage | Use a manual defrost freezer and avoid repeated freeze thaw cycles. Store at 4 °C for frequent use. Store at -20 °C for twelve months from the date of receipt. |
| Note | For research use only. |

Data Image



Immunohistochemical

Immunohistochemistry analysis of paraffin-embedded Human Cholangiocarcinoma using Histone H1.0 antibody. High-pressure and temperature Sodium Citrate pH 6.0 was used for antigen retrieval.



Western blot

Western blot analysis of Histone H1.0 in C6, CHO-K1 lysates using Histone H1.0 antibody.