

Anti-GPX1 Antibody (R1K91)

Summary

Catalog No.	RHC23703
Clone ID	R1K91
Host species	Rabbit
Tested applications	IF: 1:50-1:200, IHC: 1:100-1:200, IP: 1:20-1:50, WB: 1:1000-1:2000
Species reactivity	Human, Rat
Form	Liquid
Storage buffer	0.01M PBS, pH 7.4, 0.05% BSA, 50% Glycerol, 0.05% Sodium azide.
Concentration	1 mg/ml
Purity	>95% by SDS-PAGE.
Clonality	Monoclonal
Isotype	IgG
Applications	IF, IHC, IP, WB
Target	Cellular glutathione peroxidase, Glutathione peroxidase 1, GPx-1, GPX1, GSHPx-1
Purification	Protein A/G purified from cell culture supernatant.
Endotoxin level	Please contact with the lab for this information.
Accession	P07203
Stability and Storage	Use a manual defrost freezer and avoid repeated freeze thaw cycles. Store at 4 °C for frequent use. Store at -20 °C for twelve months from the date of receipt.

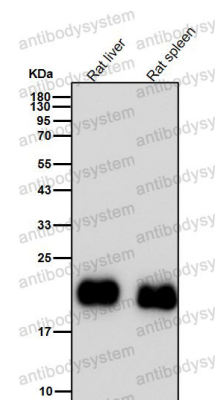
Note For research use only.

Data Image



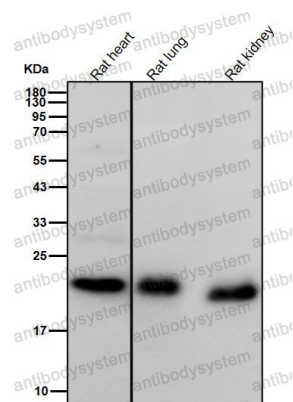
Western blot

Western blot analysis of GPX1 expression in SH SY5Y cell lysate.



Western blot

All lanes use the Antibody at 1:2k dilution for 1 hour at room temperature.



Western blot

All lanes use the Antibody at 1:2k dilution for 1 hour at room temperature.