

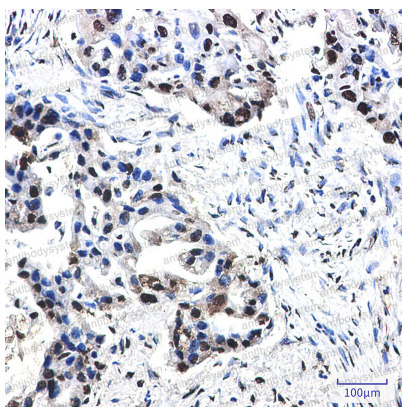
Anti-Phospho-NPM1 (Thr199) Antibody (R1K80)

Summary

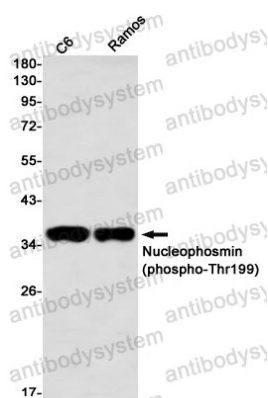
Catalog No.	RHC21702
Clone ID	R1K80
Host species	Rabbit
Tested applications	IHC: 1:50-1:100, IP: 1:20, WB: 1:500-1:1000
Species reactivity	Human, Rat
Form	Liquid
Storage buffer	0.01M PBS, pH 7.4, 0.05% BSA, 50% Glycerol, 0.05% Sodium azide.
Concentration	1 mg/ml
Purity	>95% by SDS-PAGE.
Clonality	Monoclonal
Isotype	IgG
Applications	IHC, IP, WB
Target	NPM, Nucleolar protein NO38, Numatrin, NPM1, Nucleolar phosphoprotein B23, Nucleophosmin
Purification	Protein A/G purified from cell culture supernatant.
Endotoxin level	Please contact with the lab for this information.
Accession	P06748
Stability and Storage	Use a manual defrost freezer and avoid repeated freeze thaw cycles. Store at 4 °C for frequent use. Store at -20 °C for twelve months from the date of receipt.

Note

For research use only.

Data Image**Immunohistochemical**

Immunohistochemistry analysis of paraffin-embedded Human lung cancer using Nucleophosmin (Phospho-Thr199) antibody. High-pressure and temperature Sodium Citrate pH 6.0 was used for antigen retrieval.

**Western blot**

Western blot analysis of Nucleophosmin (Phospho-Thr199) in C6, Ramos lysates using Phospho-Nucleophosmin (Thr199) antibody.