

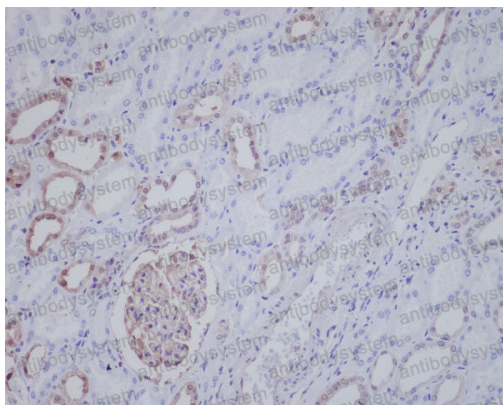
Anti-NPM1 Antibody (R1K79)

Summary

Catalog No.	RHC21703
Clone ID	R1K79
Host species	Rabbit
Tested applications	IF: 1:50-1:200, IHC: 1:100-1:200
Species reactivity	Human, Mouse, Rat
Form	Liquid
Storage buffer	0.01M PBS, pH 7.4, 0.05% BSA, 50% Glycerol, 0.05% Sodium azide.
Concentration	1 mg/ml
Purity	>95% by SDS-PAGE.
Clonality	Monoclonal
Isotype	IgG
Applications	IF, IHC
Target	NPM, Nucleolar protein NO38, Numatrin, NPM1, Nucleolar phosphoprotein B23, Nucleophosmin
Purification	Protein A/G purified from cell culture supernatant.
Endotoxin level	Please contact with the lab for this information.
Accession	P06748, Q9UM73
Stability and Storage	Use a manual defrost freezer and avoid repeated freeze thaw cycles. Store at 4 °C for frequent use. Store at -20 °C for twelve months from the date of receipt.

Note For research use only.

Data Image



Immunohistochemical

Immunohistochemical analysis of paraffin-embedded human kidney, using ALK Antibody.