

# Anti-ENO1/2/3 Antibody (R1K76)

## Summary

---

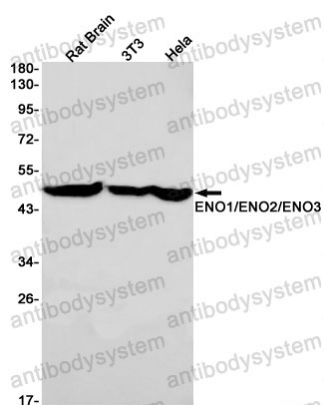
<b>Catalog No.</b>	RHC21203
<b>Clone ID</b>	R1K76
<b>Host species</b>	Rabbit
<b>Tested applications</b>	WB: 1:500-1:1000
<b>Species reactivity</b>	Human, Mouse, Rat
<b>Form</b>	Liquid
<b>Storage buffer</b>	0.01M PBS, pH 7.4, 0.05% BSA, 50% Glycerol, 0.05% Sodium azide.
<b>Concentration</b>	1 mg/ml
<b>Purity</b>	>95% by SDS-PAGE.
<b>Clonality</b>	Monoclonal
<b>Isotype</b>	IgG
<b>Applications</b>	WB
<b>Target</b>	Non-neural enolase, 2-phospho-D-glycerate hydro-lyase, MPB-1, ENO1, Plasminogen-binding protein, Enolase 1, C-myc promoter-binding protein, Alpha-enolase, MBP-1, MBPB1, MPB1, ENO1L1, NNE, Phosphopyruvate hydratase
<b>Purification</b>	Protein A/G purified from cell culture supernatant.
<b>Endotoxin level</b>	Please contact with the lab for this information.
<b>Accession</b>	P06733

**Stability and Storage**

Use a manual defrost freezer and avoid repeated freeze thaw cycles. Store at 4 °C for frequent use. Store at -20 °C for twelve months from the date of receipt.

**Note**

For research use only.

**Data Image**

Western blot

Western blot analysis of ENO1/ENO2/ENO3 in rat Brain, 3T3, HeLa lysates using ENO1/2/3 antibody.