

# Anti-ENO1/Alpha-enolase Antibody (R1K75)

## Summary

---

<b>Catalog No.</b>	RHC21202
<b>Clone ID</b>	R1K75
<b>Host species</b>	Rabbit
<b>Tested applications</b>	IF: 1:50-1:200, IHC: 1:50-1:100, IP: 1:20, WB: 1:500-1:1000
<b>Species reactivity</b>	Human, Mouse, Rat
<b>Form</b>	Liquid
<b>Storage buffer</b>	0.01M PBS, pH 7.4, 0.05% BSA, 50% Glycerol, 0.05% Sodium azide.
<b>Concentration</b>	1 mg/ml
<b>Purity</b>	>95% by SDS-PAGE.
<b>Clonality</b>	Monoclonal
<b>Isotype</b>	IgG
<b>Applications</b>	IF, IHC, IP, WB
<b>Target</b>	Non-neural enolase, 2-phospho-D-glycerate hydro-lyase, MPB-1, ENO1, Plasminogen-binding protein, Enolase 1, C-myc promoter-binding protein, Alpha-enolase, MBP-1, MBPB1, MPB1, ENO1L1, NNE, Phosphopyruvate hydratase
<b>Purification</b>	Protein A/G purified from cell culture supernatant.
<b>Endotoxin level</b>	Please contact with the lab for this information.
<b>Accession</b>	P06733

**Stability and Storage**

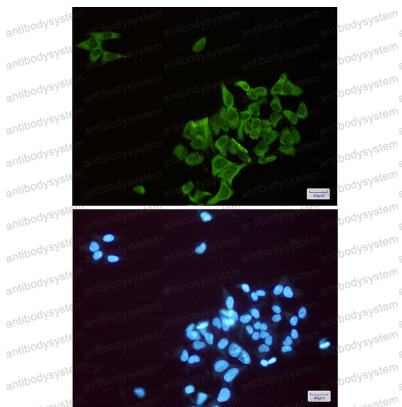
Use a manual defrost freezer and avoid repeated freeze thaw cycles. Store at 4 °C for frequent use. Store at -20 °C for twelve months from the date of receipt.

**Note**

For research use only.

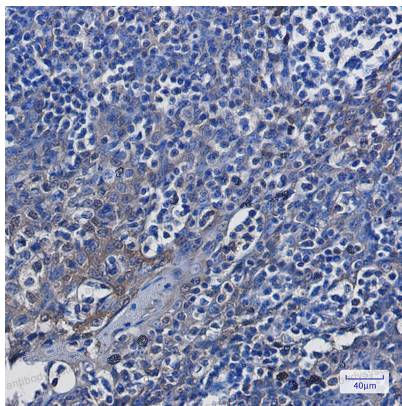
**Data Image**

---



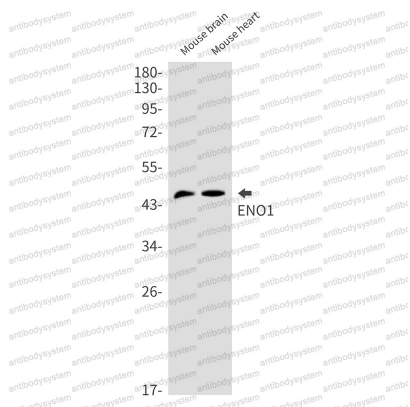
Immunofluorescence

Immunocytochemistry analysis of ENO1(green) in Hela using ENO1 antibody, and DAPI(blue)



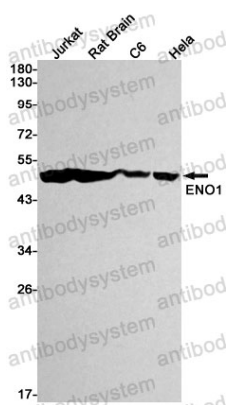
Immunohistochemical

Immunohistochemistry analysis of paraffin-embedded Human tonsil using ENO1 antibody. High-pressure and temperature Sodium Citrate pH 6.0 was used for antigen retrieval.



Western blot

Western blot analysis of ENO1 in mouse brain, mouse heart lysates using ENO1 antibody.



Western blot

Western blot analysis of ENO1 in Jurkat, rat Brain, C6, HeLa lysates using ENO1 antibody.