

Anti-Phospho-EIF4E/eIF4E (Ser209) Antibody (R1K72)

Summary

Catalog No.	RHC20902
Clone ID	R1K72
Host species	Rabbit
Tested applications	IF: 1:50-1:200, IHC: 1:50-1:100, IP: 1:20, WB: 1:500-1:1000
Species reactivity	Human, Mouse, Rat
Form	Liquid
Storage buffer	0.01M PBS, pH 7.4, 0.05% BSA, 50% Glycerol, 0.05% Sodium azide.
Concentration	1 mg/ml
Purity	>95% by SDS-PAGE.
Clonality	Monoclonal
Isotype	IgG
Applications	IF, IHC, IP, WB
Target	Eukaryotic translation initiation factor 4E, EIF4F, mRNA cap-binding protein, eIF4E, eIF-4E, eIF-4F 25 kDa subunit, EIF4EL1, EIF4E
Purification	Protein A/G purified from cell culture supernatant.
Endotoxin level	Please contact with the lab for this information.
Accession	P06730

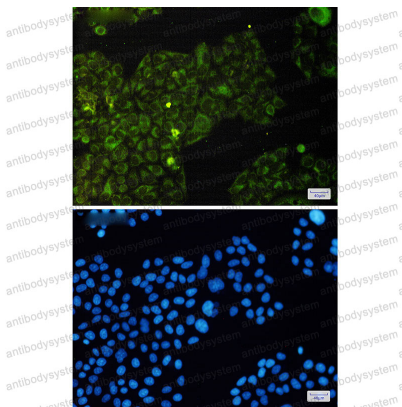
Stability and Storage

Use a manual defrost freezer and avoid repeated freeze thaw cycles. Store at 4 °C for frequent use. Store at -20 °C for twelve months from the date of receipt.

Note

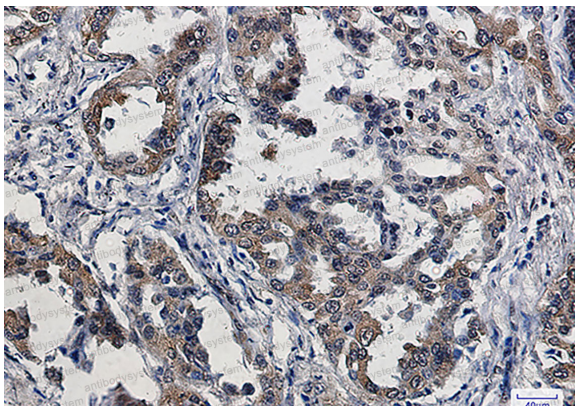
For research use only.

Data Image



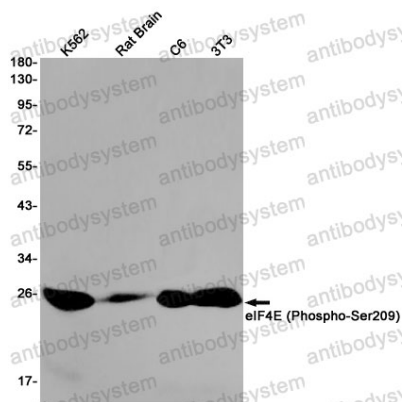
Immunofluorescence

Immunocytochemistry analysis of eIF4E (Phospho-Ser209)(green) in HeLa using eIF4E (Phospho-Ser209) antibody, and DAPI(blue)



Immunohistochemical

Immunohistochemistry analysis of paraffin-embedded Human lung cancer using Phospho-eIF4E (Ser209) antibody. High-pressure and temperature Sodium Citrate pH 6.0 was used for antigen retrieval.



Western blot

Western blot analysis of eIF4E (Phospho-Ser209) in K562, rat Brain, C6, 3T3 lysates using Phospho-eIF4E (Ser209) antibody.