

# Anti-S100A6 Antibody (R1K71)

## Summary

---

<b>Catalog No.</b>	RHC20601
<b>Clone ID</b>	R1K71
<b>Host species</b>	Rabbit
<b>Tested applications</b>	IF: 1:50-1:200, IP: 1:20, WB: 1:500-1:1000
<b>Species reactivity</b>	Human, Mouse
<b>Form</b>	Liquid
<b>Storage buffer</b>	0.01M PBS, pH 7.4, 0.05% BSA, 50% Glycerol, 0.05% Sodium azide.
<b>Concentration</b>	1 mg/ml
<b>Purity</b>	>95% by SDS-PAGE.
<b>Clonality</b>	Monoclonal
<b>Isotype</b>	IgG
<b>Applications</b>	IF, IP, WB
<b>Target</b>	Calcyclin, S100A6, S100 calcium-binding protein A6, Protein S100-A6, Prolactin receptor-associated protein, MLN 4, CACY, PRA, Growth factor-inducible protein 2A9
<b>Purification</b>	Protein A/G purified from cell culture supernatant.
<b>Endotoxin level</b>	Please contact with the lab for this information.
<b>Accession</b>	P06703

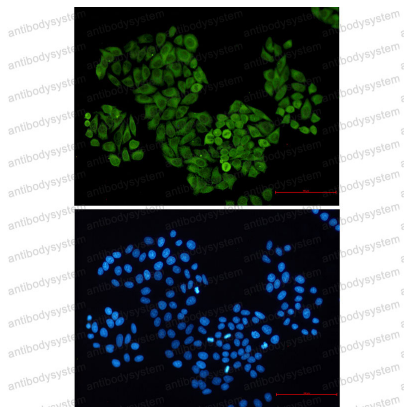
## Recombinant Proteins &amp; Antibodies

**Stability and Storage**

Use a manual defrost freezer and avoid repeated freeze thaw cycles. Store at 4 °C for frequent use. Store at -20 °C for twelve months from the date of receipt.

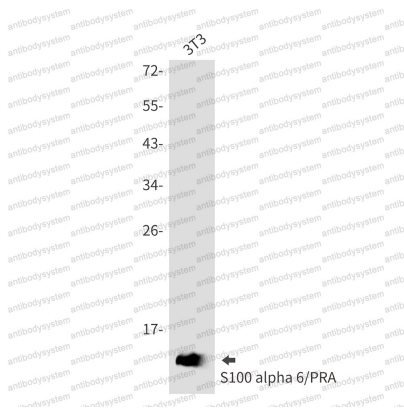
**Note**

For research use only.

**Data Image**

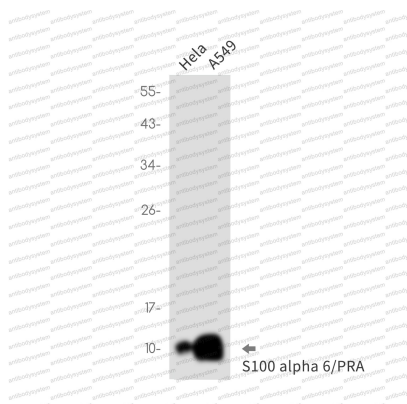
Immunofluorescence

Immunocytochemistry analysis of S100 alpha 6/PRA (green) in HeLa using S100 alpha 6/PRA antibody, and DAPI (blue)



Western blot

Western blot analysis of S100 alpha 6/PRA in 3T3 lysates using S100 alpha 6 antibody.



Western blot

Western blot analysis of S100 alpha 6/PRA in HeLa, A549 lysates using S100 alpha 6/PRA antibody.