

Anti-ATP5F1B Antibody (R1K69)

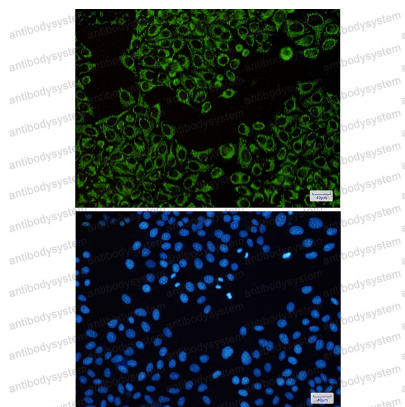
Summary

Catalog No.	RHC20301
Clone ID	R1K69
Host species	Rabbit
Tested applications	IF: 1:50-1:200, IHC: 1:50-1:100, IP: 1:20, WB: 1:500-1:1000
Species reactivity	Human, Mouse, Rat, Monkey
Form	Liquid
Storage buffer	0.01M PBS, pH 7.4, 0.05% BSA, 50% Glycerol, 0.05% Sodium azide.
Concentration	1 mg/ml
Purity	>95% by SDS-PAGE.
Clonality	Monoclonal
Isotype	IgG
Applications	IF, IHC, IP, WB
Target	ATPSB, ATP synthase F1 subunit beta, ATP5F1B, ATP5B, ATPMB, ATP synthase subunit beta, mitochondrial
Purification	Protein A/G purified from cell culture supernatant.
Endotoxin level	Please contact with the lab for this information.
Accession	P06576
Stability and Storage	Use a manual defrost freezer and avoid repeated freeze thaw cycles. Store at 4 °C for frequent use. Store at -20 °C for twelve months from the date of receipt.

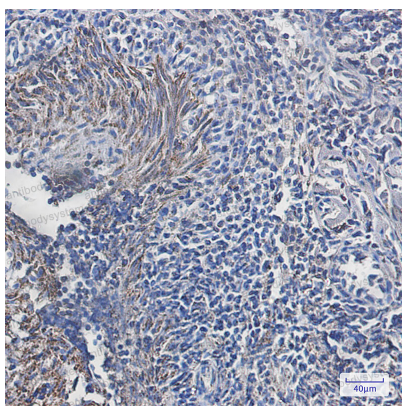
Note

For research use only.

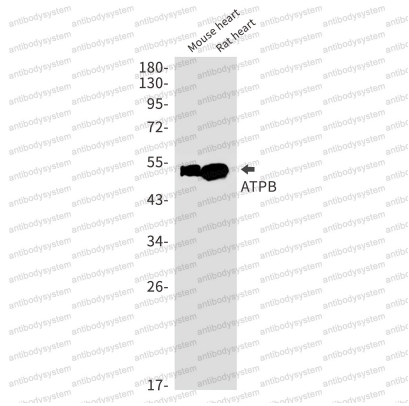
Data Image

**Immunofluorescence**

Immunocytochemistry analysis of ATPB(green) in Hela using ATPB antibody, and DAPI(blue).

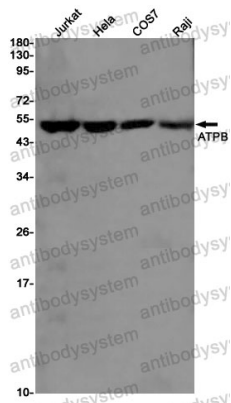
**Immunohistochemical**

Immunohistochemistry analysis of paraffin-embedded Human tonsil using ATPB antibody. High-pressure and temperature Sodium Citrate pH 6.0 was used for antigen retrieval.



Western blot

Western blot analysis of ATPB in mouse heart, rat heart lysates using ATPB antibody.



Western blot

Western blot analysis of ATPB in Jurkat, Hela, COS7, Raji lysates using ATPB antibody.