

Anti-CDK1 Antibody (R1K67)

Summary

Catalog No.	RHC20204
Clone ID	R1K67
Host species	Rabbit
Tested applications	IP: 1:20, WB: 1:500-1:1000
Species reactivity	Human
Form	Liquid
Storage buffer	0.01M PBS, pH 7.4, 0.05% BSA, 50% Glycerol, 0.05% Sodium azide.
Concentration	1 mg/ml
Purity	>95% by SDS-PAGE.
Clonality	Monoclonal
Isotype	IgG
Applications	IP, WB
Target	CDC28A, CDKN1, P34CDC2, p34 protein kinase, CDK1, Cell division protein kinase 1, Cell division control protein 2 homolog, CDC2, Cyclin-dependent kinase 1
Purification	Protein A/G purified from cell culture supernatant.
Endotoxin level	Please contact with the lab for this information.
Accession	P06493

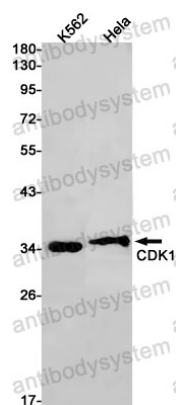
Stability and Storage

Use a manual defrost freezer and avoid repeated freeze thaw cycles. Store at 4 °C for frequent use. Store at -20 °C for twelve months from the date of receipt.

Note

For research use only.

Data Image



Western blot

Western blot analysis of CDK1 in K562, HeLa lysates using CDK1 antibody.