

Anti-Phospho-CDK1/2 (Thr14) Antibody (R1K66)

Summary

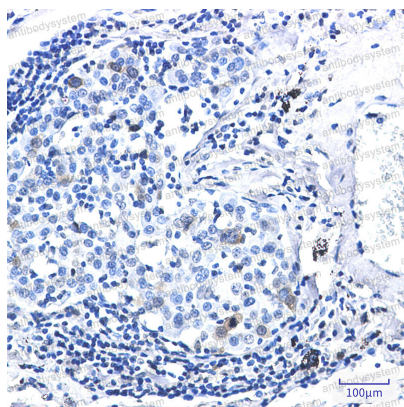
Catalog No.	RHC20202
Clone ID	R1K66
Host species	Rabbit
Tested applications	IHC: 1:50-1:100, IP: 1:20, WB: 1:500-1:1000
Species reactivity	Human
Form	Liquid
Storage buffer	0.01M PBS, pH 7.4, 0.05% BSA, 50% Glycerol, 0.05% Sodium azide.
Concentration	1 mg/ml
Purity	>95% by SDS-PAGE.
Clonality	Monoclonal
Isotype	IgG
Applications	IHC, IP, WB
Target	CDC28A, CDKN1, P34CDC2, p34 protein kinase, CDK1, Cell division protein kinase 1, Cell division control protein 2 homolog, CDC2, Cyclin-dependent kinase 1
Purification	Protein A/G purified from cell culture supernatant.
Endotoxin level	Please contact with the lab for this information.
Accession	P06493, P24941

Stability and Storage

Use a manual defrost freezer and avoid repeated freeze thaw cycles. Store at 4 °C for frequent use. Store at -20 °C for twelve months from the date of receipt.

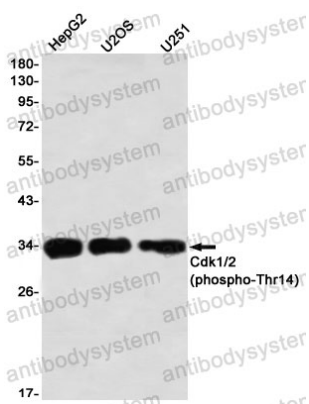
Note

For research use only.

Data Image

Immunohistochemical

Immunohistochemistry analysis of paraffin-embedded Human lung cancer using Cdk1/2 (Phospho-Thr14) antibody. High-pressure and temperature Sodium Citrate pH 6.0 was used for antigen retrieval.



Western blot

Western blot analysis of Cdk1/2 (Phospho-Thr14) in HepG2, U2OS, U251 lysates using Phospho-CDK1/2 (Thr14) antibody.